



282/29-31 Cliff Road Epping NSW

2  2  1 

Perfectly positioned in one of Epping's most convenient and family-friendly pockets, this beautifully maintained north-facing apartment delivers a superb combination of generous proportions, modern comfort and lifestyle convenience.

Designed with functionality and natural light in mind, the home showcases a spacious open-plan living and dining area enhanced by a desirable north-facing aspect, flowing effortlessly onto a large entertainer's balcony ideal for relaxing or entertaining year-round. A dedicated study nook adds flexibility for those working from home or seeking additional study space.

The modern kitchen is thoughtfully appointed with quality

Type : Apartment
Price : Just Listed !
View : <https://www.uniland.com.au/sale/nsw/northern-suburbs/epping/residential/apartment/8698112>

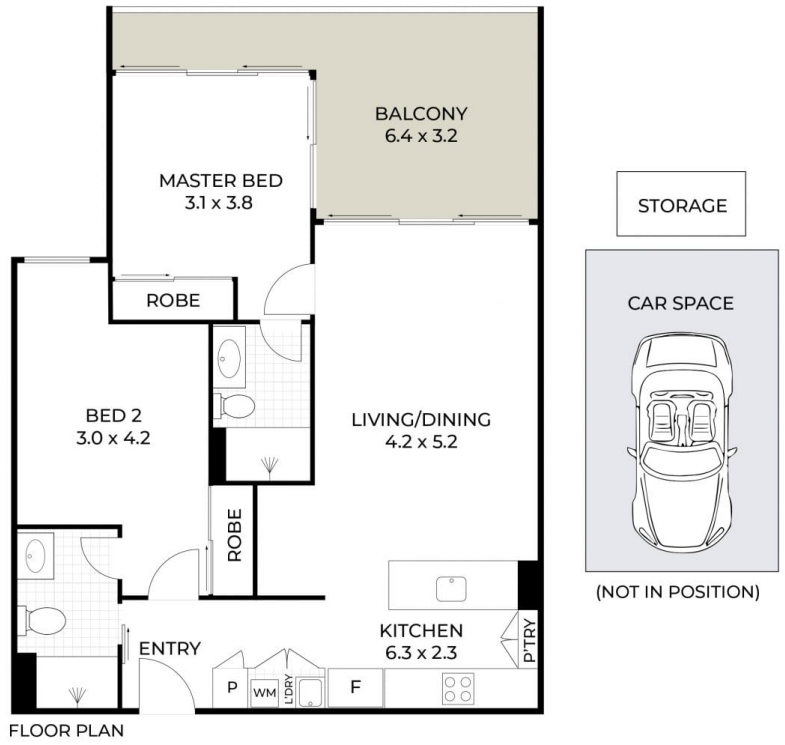


Kris Yu
02 9869 7788

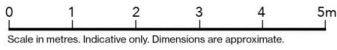


Jan Zhao
02 9869 7788

[For full version visit the website](https://www.uniland.com.au)



FLOOR PLAN



DISCLAIMER: PLANS SHOWN ARE FOR MARKETING PURPOSES ONLY. ALL DIMENSIONS ARE APPROXIMATE AND NOT TO SCALE. THEY ARE SUBJECT TO ERRORS AND INACCURACIES AND NO LIABILITY WILL BE ACCEPTED. INTERESTED PARTIES SHOULD MAKE THEIR OWN INQUIRES.

282/29-31 Cliff Road, Epping

