






**312/26 Cambridge Street Epping NSW**

2  1  1 

Modern 2 Bedroom Apartment with quiet and peaceful East facing. Only 300 meters from Epping train station and easy access into M2 for transportation. Surrounded by various parks, entertainment facilities, retail shops and restaurants. The apartment is located within the catchment of Epping Public School, Epping Boys High School and Cheltenham Girls High School.

**Type** : Apartment  
**Land Size** : 101 sqm  
**View** : <https://www.uniland.com.au/lease/nsw/north-ern-suburbs/epping/residential/apartment/8690309>

**Main Features:**

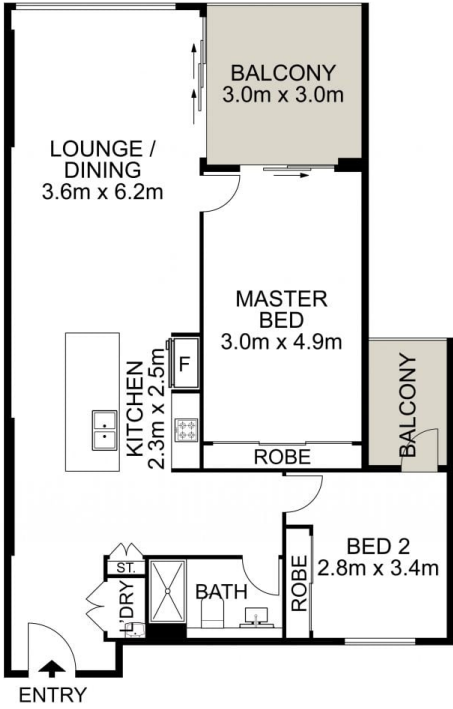
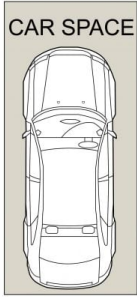
- Spacious and bright living & bedroom
- Floor-to-ceiling windows
- Ducted air conditioning
- High ceiling with down lighting
- Gourmet gas kitchen with stone benchtops & stainless steel appliances



**Linda Bo**  
**02 9869 7788**

[For full version visit the website](https://www.uniland.com.au)

STORAGE



0 1 2 3 4 5  
Scale in metres. Indicative only. Dimensions are approximate.



DISCLAIMER: PLANS SHOWN ARE FOR MARKETING PURPOSES ONLY. ALL DIMENSIONS ARE APPROXIMATE AND NOT TO SCALE. THEY ARE SUBJECT TO ERRORS AND INACCURACIES AND NO LIABILITY WILL BE ACCEPTED. INTERESTED PARTIES SHOULD MAKE THEIR OWN INQUIRES.

312/26 Cambridge Street, Epping

