



87 Arcadian Circuit Carlingford NSW

6  4  3 

Set on an expansive 1,037 sqm parcel with an impressive 25m frontage, this exceptional residence is built by award-winning Elandra Homes, showcasing outstanding craftsmanship, scale, and contemporary design. The home offers exceptional outdoor space and privacy, perfectly suited for family living and entertaining.

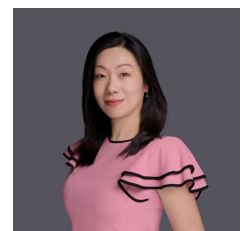
Spanning approximately 550sqm of internal space, the residence features six oversized bedrooms, four-and-a-half luxurious bathrooms, multiple living zones, a dedicated study, and a triple lock-up garage. Every space has been thoughtfully designed to maximise natural light, functionality, and everyday comfort.

A combination of formal and informal living areas provides outstanding flexibility for growing families, complemented by an expansive upstairs rumpus room and a private home

Type : House
Price : AUCTION
Land Size : 1037 sqm
View : <https://www.uniland.com.au/sale/nsw/northern-suburbs/carlingford/residential/house/8689062>

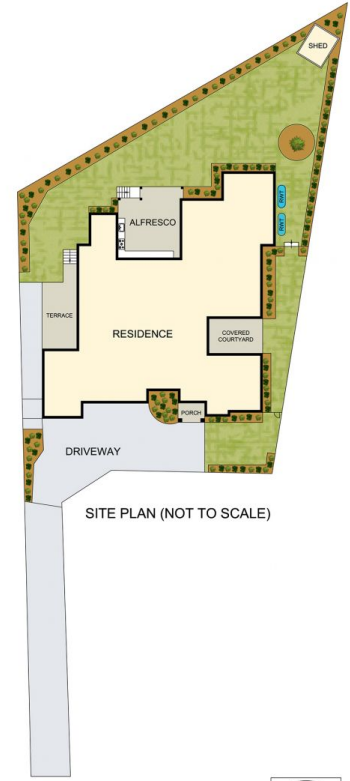
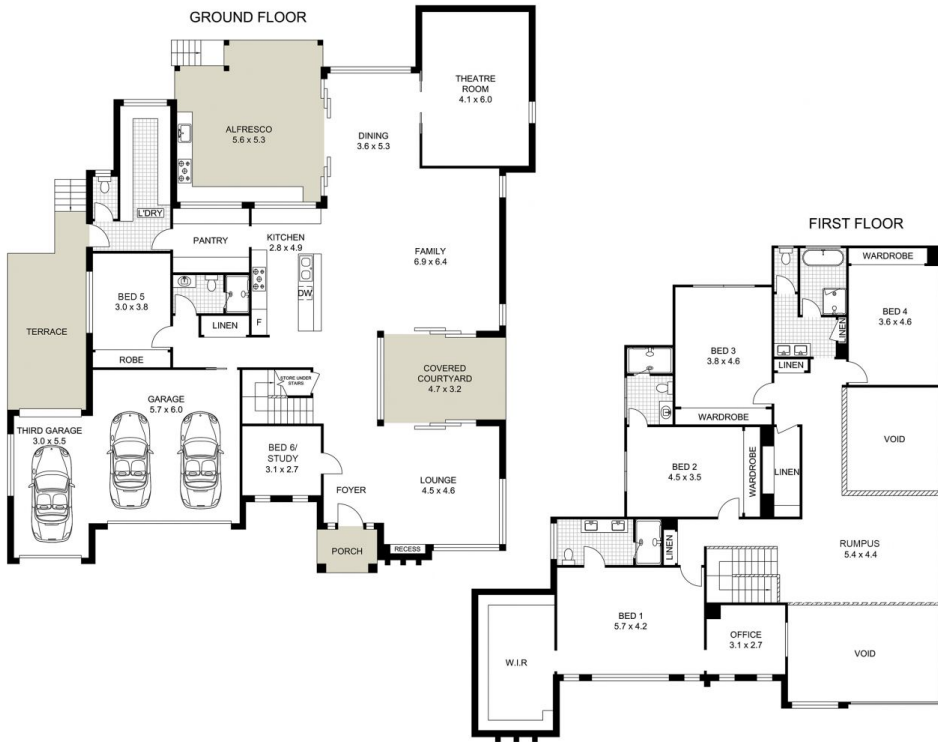


Andy Lin
02 9869 7788



Julie Zhang
02 9869 7788

[For full version visit the website](https://www.uniland.com.au)



0 1 2 3 4 5m

Scale in metres. Indicative only. Dimensions are approximate.

DISCLAIMER: PLANS SHOWN ARE FOR MARKETING PURPOSES ONLY, ALL DIMENSIONS ARE APPROXIMATE AND NOT TO SCALE. THEY ARE SUBJECT TO ERRORS AND INACCURACIES AND NO LIABILITY WILL BE ACCEPTED. INTERESTED PARTIES SHOULD MAKE THEIR OWN INQUIRIES.



87 Arcadian Circuit, Carlingford

