



### 23a George Street Epping NSW

5  3  2 

Presenting an exceptional opportunity to secure an architecturally designed duplex offering space, style, and ultimate convenience. Boasting 5 generous bedrooms and 3 modern bathrooms, this residence is perfectly tailored for growing families seeking both comfort and quality.

Bathed in natural light, the home features a desirable north-facing backyard, creating a bright and inviting atmosphere throughout. The thoughtfully designed layout offers seamless indoor-outdoor living, ideal for both everyday living and entertaining.

Positioned in a highly sought-after location, just a short 5-minute walk to Epping West Public School, and within the prestigious catchment zones for Cheltenham Girls High

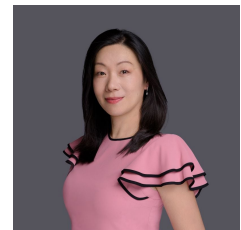
**Type** : Semi Detached

**Price** : Auction

**View** : <https://www.uniland.com.au/sale/nsw/northern-suburbs/epping/residential/semi-detached/8677156>

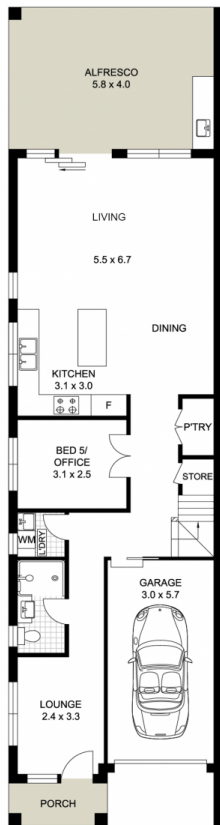


**Andy Lin**  
02 9869 7788

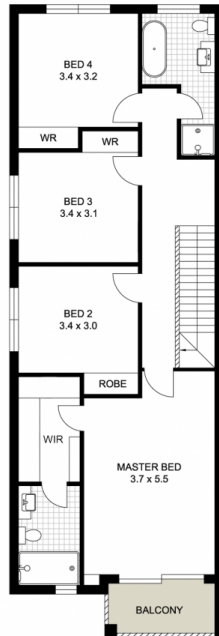


**Julie Zhang**  
02 9869 7788

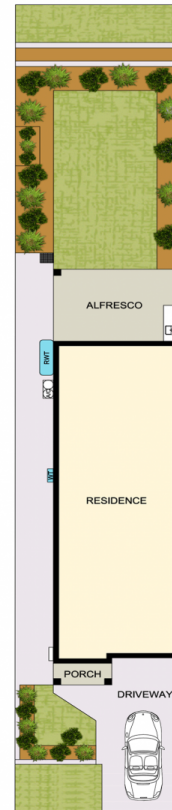
[For full version visit the website](https://www.uniland.com.au)



GROUND FLOOR



FIRST FLOOR



SITE PLAN (NOT TO SCALE)



0 1 2 3 4 5m  
Scale in metres. Indicative only. Dimensions are approximate.

DISCLAIMER: PLANS SHOWN ARE FOR MARKETING PURPOSES ONLY, ALL DIMENSIONS ARE APPROXIMATE AND NOT TO SCALE. THEY ARE SUBJECT TO ERRORS AND INACCURACIES AND NO LIABILITY WILL BE ACCEPTED. INTERESTED PARTIES SHOULD MAKE THEIR OWN INQUIRES.

23A George Street, Epping

