

## 1605/2-4 Chester Street Epping NSW

2 🛏 2 🚿 1 🚗

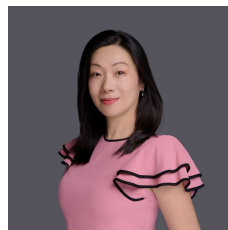
### Modern Elegance with City Views in the Heart of Epping

Located in a highly sought-after pocket of Epping, this exquisite two-bedroom apartment offers the perfect balance of modern style and unmatched convenience. Whether you're a professional, a growing family, or a savvy investor, this residence ticks every box.

Just minutes to Epping Metro Station and within walking distance to Epping Public School, the location delivers effortless connectivity. Enjoy rapid transport links to Epping Boys High, Cheltenham Girls High, Macquarie Centre, and Macquarie University - putting education, shopping, and lifestyle all within easy reach.

Step inside to experience exceptional lifestyle living, with a beautifully designed open-plan layout enhanced by a unique clerestory window feature, bathing the interiors in

**Type** : Apartment  
**Building Size** : 101 sqm  
**View** : <https://www.uniland.com.au/sale/nsw/northern-suburbs/epping/residential/apartment/8465381>

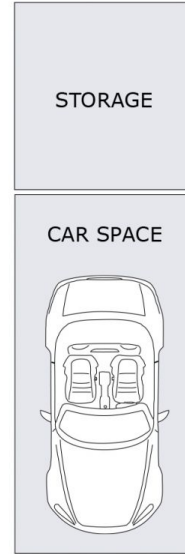
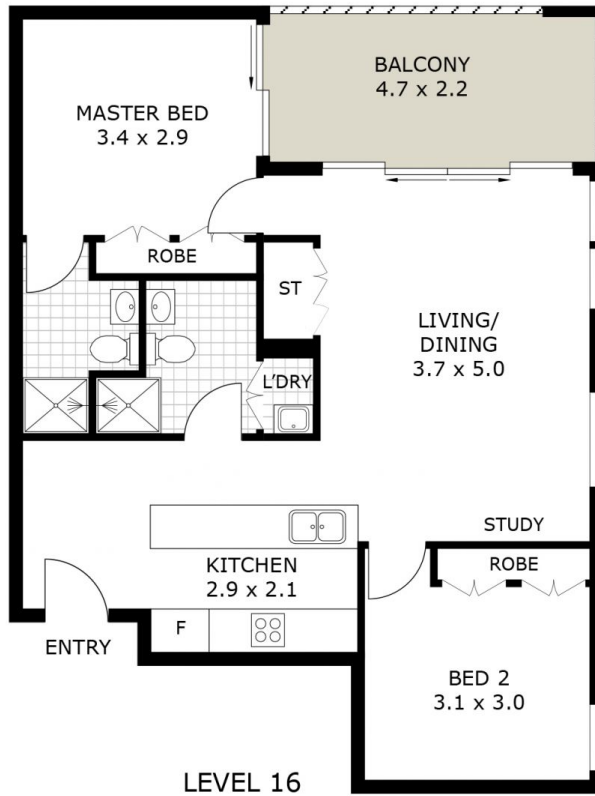


**Julie Zhang**  
02 9869 7788



**Andy Lin**  
02 9869 7788

[For full version visit the website](https://www.uniland.com.au)



0 1 2 3 4 5m  
Scale in metres. Indicative only. Dimensions are approximate.



DISCLAIMER: PLANS SHOWN ARE FOR MARKETING PURPOSES ONLY. ALL DIMENSIONS ARE APPROXIMATE AND NOT TO SCALE. THEY ARE SUBJECT TO ERRORS AND INACCURACIES AND NO LIABILITY WILL BE ACCEPTED. INTERESTED PARTIES SHOULD MAKE THEIR OWN INQUIRES.

1605/2 Chester Street, Epping

