



**7/94 Park Road Rydalmere NSW**

3  1  2 

Offering the perfect balance of lifestyle and location, this spacious full-brick townhouse is tucked away in a sought-after pocket of Rydalmere. With easy access to shops, parks, schools and public transport - including Rydalmere Wharf - this home is ideal for those seeking comfort, quality, and everyday ease.

Beautifully appointed and move-in ready, it's a smart choice for first home buyers, young families, or investors looking to secure a solid property in a rapidly growing area.

**Main Features:**

\* Three generous bedrooms, all with built-in wardrobes and

[For full version visit the website](https://www.uniland.com.au)

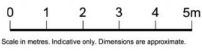
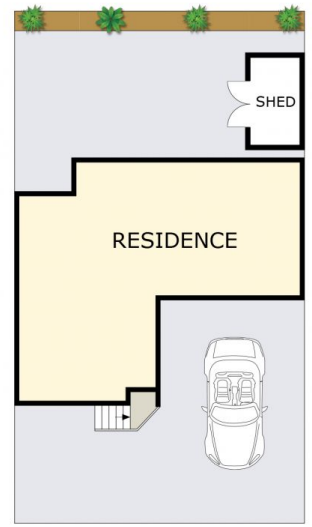
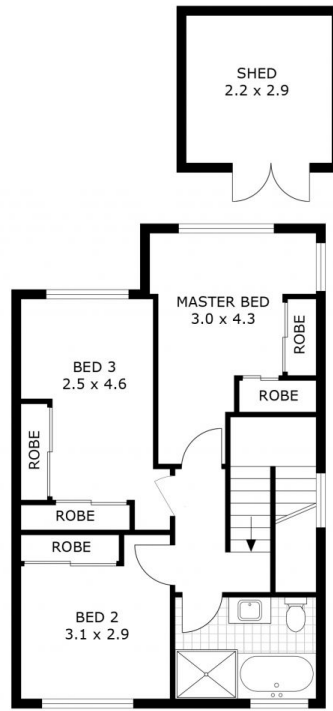
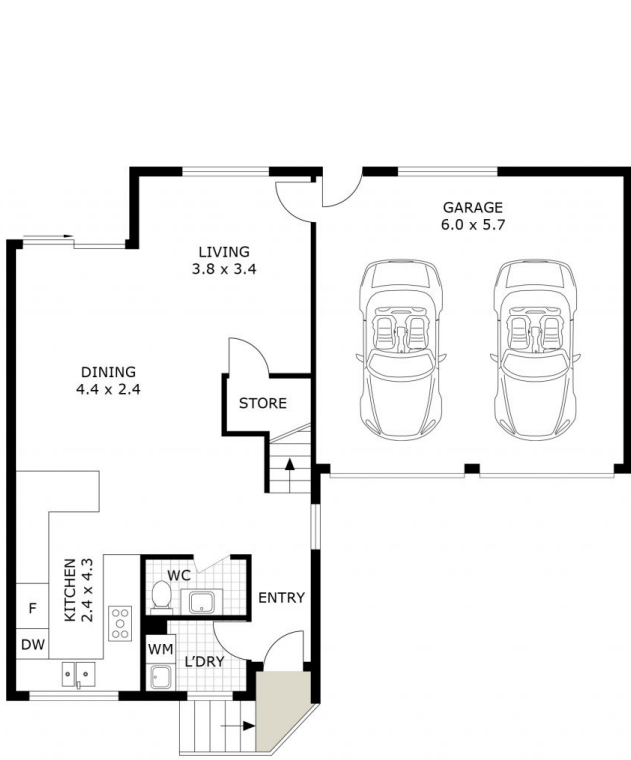
**Type** : Townhouse  
**Building Size** : 183 sqm  
**View** : <https://www.uniland.com.au/sale/nsw/parramatta/rydalmere/residential/townhouse/8448112>



**Vicky Ruan**  
02 9869 7788



**Andy Lin**  
02 9869 7788



Scale in metres. Indicative only. Dimensions are approximate.



DISCLAIMER: PLANS SHOWN ARE FOR MARKETING PURPOSES ONLY, ALL DIMENSIONS ARE APPROXIMATE AND NOT TO SCALE. THEY ARE SUBJECT TO ERRORS AND INACCURACIES AND NO LIABILITY WILL BE ACCEPTED. INTERESTED PARTIES SHOULD MAKE THEIR OWN INQUIRIES.

7/94 Park Road, Rydalmere

