

25A Rutledge Street Eastwood NSW

5 🛏 4 🚗 2 🚗

Set on 401 sqm land, this alluring French provincial opulence elegantly amalgamates with the symmetry and curves of modern architecture in this brand-new luxury home set to deliver a living experience like no other.

Towering windows, sweeping curves and classic hardwood herringbone floors under grand three-storey skylights combine with superior engineering and commercial-grade building materials to create everlasting appeal. Extravagant interiors unfold over two light-filled levels, distinguished by luxurious finishes and the latest smart-home technology.

Anchored by a stunning European kitchen finished with sumptuous marble, Miele appliances, and an entertaining island, open-plan dining and living seamlessly connect to

Type : Semi Detached
Land Size : 401 sqm
View : <https://www.uniland.com.au/lease/nsw/north-ern-suburbs/eastwood/residential/semi-detached/8417220>

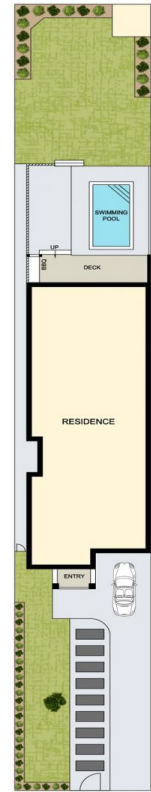
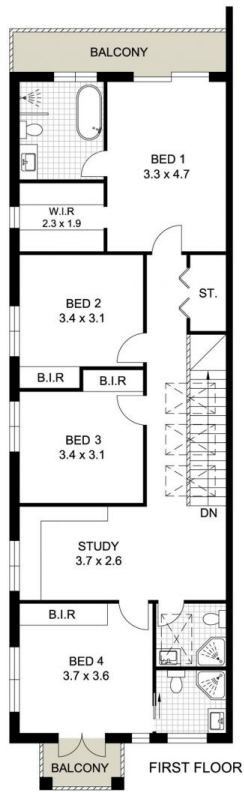
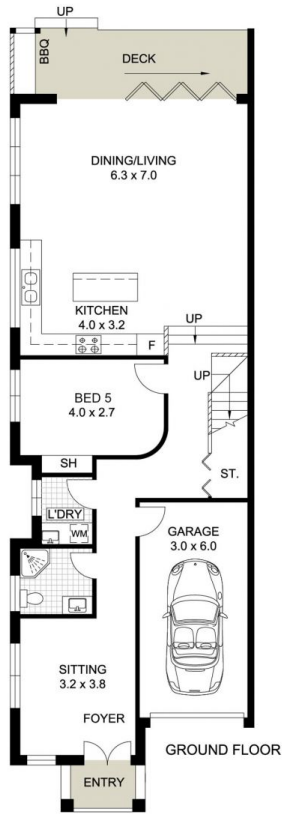


Linda Bo
02 9869 7788



Mona Mo
02 9869 7788

[For full version visit the website](https://www.uniland.com.au)



0 1 2 3 4 5m
 Scale in metres. Indicative only. Dimensions are approximate.

SITE PLAN (NOT TO SCALE)



DISCLAIMER: PLANS SHOWN ARE FOR MARKETING PURPOSES ONLY, ALL DIMENSIONS ARE APPROXIMATE AND NOT TO SCALE. THEY ARE SUBJECT TO ERRORS AND INACCURACIES AND NO LIABILITY WILL BE ACCEPTED. INTERESTED PARTIES SHOULD MAKE THEIR OWN INQUIRES.

25A Rutledge Street, Eastwood

