

1/13 O'Keefe Crescent Eastwood NSW

3  2  2 

Presenting immeasurable appeal with an address prized for its proximity to Eastwood train station and Macquarie University, this flawless single-level brick villa is a golden opportunity for families upsizing from an apartment or those downsizing for easy living. One of only two, a spacious corner position with its own street access, offers the privacy of an individual home. An enlarged sense of space flows through dedicated lounge and dining spaces detailed with beautiful timber flooring and flourishing outlooks. Thoughtful details include ducted air conditioning, solar, and secure entry, layered with the timeless elegance of a granite and gas kitchen opening to effortless courtyard entertaining, joining minimal up-keep gardens. Appointed with built-in wardrobes, charming bedrooms accompany a primary ensuite bedroom matched with a walk-in wardrobe

Type : Villa
Price : \$ 1,999,000
Building Size : 216 sqm
View : <https://www.uniland.com.au/sale/nsw/northern-suburbs/eastwood/residential/villa/8348871>

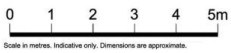
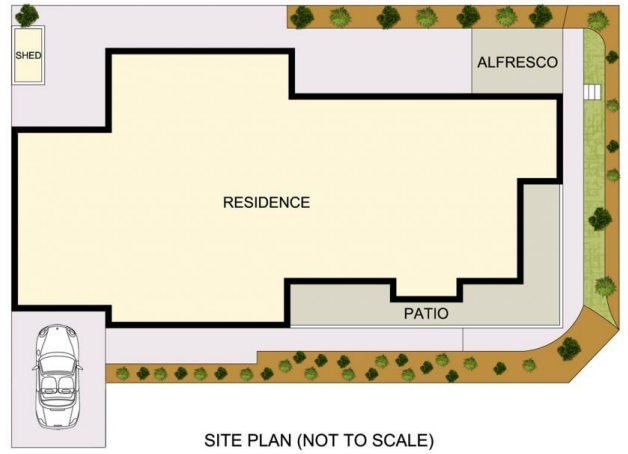
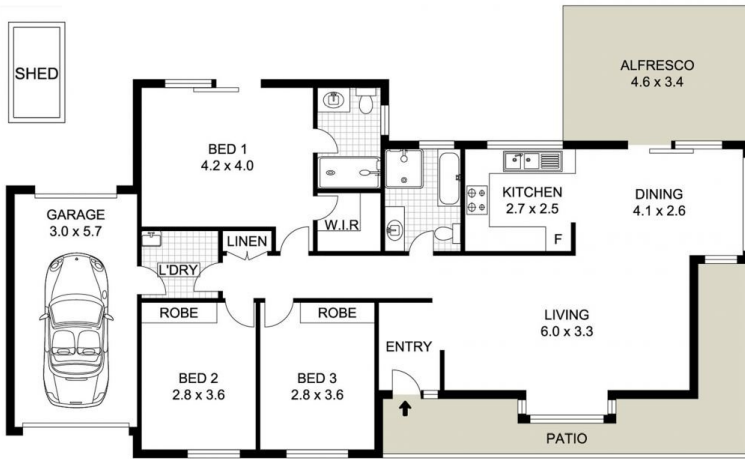


Andy Lin
02 9869 7788



Vicky Ruan
02 9869 7788

[For full version visit the website](https://www.uniland.com.au)



Scale in metres. Indicative only. Dimensions are approximate.



DISCLAIMER: PLANS SHOWN ARE FOR MARKETING PURPOSES ONLY, ALL DIMENSIONS ARE APPROXIMATE AND NOT TO SCALE. THEY ARE SUBJECT TO ERRORS AND INACCURACIES AND NO LIABILITY WILL BE ACCEPTED. INTERESTED PARTIES SHOULD MAKE THEIR OWN INQUIRES.

1/13 O'Keefe Crescent, Eastwood

