



## 24 Samuel Street Ryde NSW

5 🛏 3 🚗 2 🚗

Stretching across a prime north-east vantage, this as-new family abode offers the best of both worlds: peaceful privacy and security just moments from Top Ryde Shopping Centre, coupled with easy access to Sydney's CBD. Collecting streams of natural light throughout an elegant two-level layout, wide floorboards under airy high ceilings showcase idyllic interiors, favoring an impressive flow outdoors for memorable entertaining and relaxation. Beautifully appointed with a display of timeless stone benchtops and integrated appliances, the kitchen stylishly opens to an outdoor barbecue zone, while an island connects lounge and dining spaces inside. From gold toned door handles to vast storage, zoned ducted air conditioning and intercom entry, every detail has been thoughtfully curated for premium living. Oversized bedrooms with a

**Type** : Semi Detached  
**Price** : \$ 2,388,888  
**Land Size** : 420.5 sqm  
**View** : <https://www.uniland.com.au/sale/nsw/northern-suburbs/ryde/residential/semi-detached/8330486>

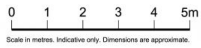
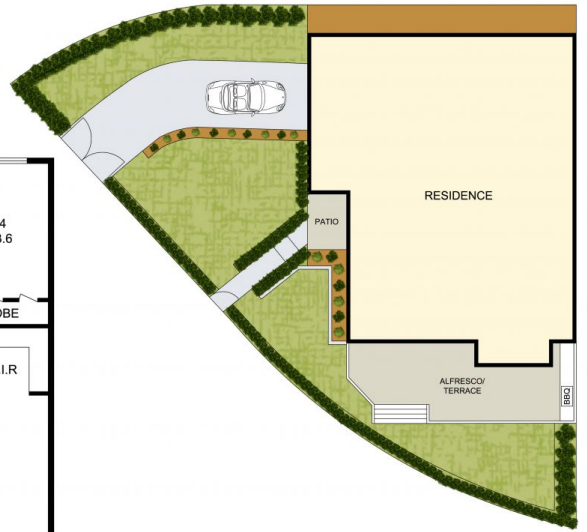
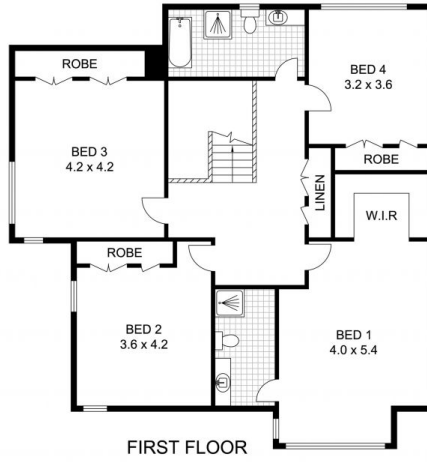


**Andy Lin**  
02 9869 7788



**Neesha Khushalani**  
02 9869 7788

[For full version visit the website](https://www.uniland.com.au)



**DISCLAIMER:** PLANS SHOWN ARE FOR MARKETING PURPOSES ONLY. ALL DIMENSIONS ARE APPROXIMATE AND NOT TO SCALE. THEY ARE SUBJECT TO ERRORS AND INACCURACIES AND NO LIABILITY WILL BE ACCEPTED. INTERESTED PARTIES SHOULD MAKE THEIR OWN INQUIRES.



24 Samuel Street, Ryde

