



## 10A Broulee Place Carlingford NSW

5 🏠 4 🚗 2 🚗

Don't miss this unique opportunity to secure one of Carlingford's rarest finds. Extraordinary land size: 465.10sqm with 10.94m frontage, situated on the quiet and beautiful street Broulee Place, this double brick customize design elegant house is now available.

The open plan design seamlessly connects the gourmet kitchen, dining, and living areas to the covered alfresco entertaining space, complete with a fully equipped outdoor kitchen - an ideal setting for memorable family gatherings and celebrations.

With walking distance to public transport, shops, and parks, proximity to Carlingford Court, Carlingford Village, and some of the best schools including Carlingford High and

[For full version visit the website](https://www.uniland.com.au)

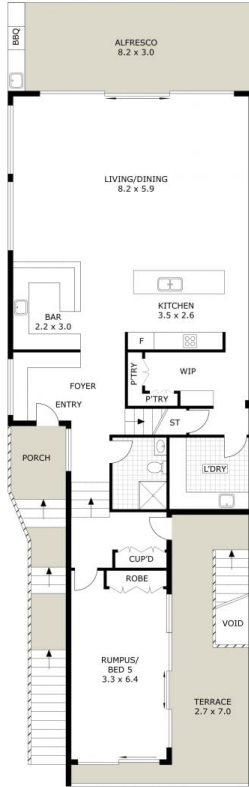
**Type** : Semi Detached  
**Price** : \$ 2,521,888  
**Land Size** : 465.1 sqm  
**View** : <https://www.uniland.com.au/sale/nsw/northern-suburbs/carlingford/residential/semi-detached/8322428>



**Andy Lin**  
02 9869 7788



**Karen Ge**  
02 9869 7788



GROUND LEVEL



FIRST LEVEL



SITE PLAN (NOT TO SCALE)

0 1 2 3 4 5m

Scale in metres. Indicative only. Dimensions are approximate.

DISCLAIMER: PLANS SHOWN ARE FOR MARKETING PURPOSES ONLY, ALL DIMENSIONS ARE APPROXIMATE AND NOT TO SCALE. THEY ARE SUBJECT TO ERRORS AND INACCURACIES AND NO LIABILITY WILL BE ACCEPTED. INTERESTED PARTIES SHOULD MAKE THEIR OWN INQUIRES.



10 broulee Place, carlingford

