



**13 Keppel Road Ryde NSW**

3  3  2 

Unlock the Potential of Two Luxury Duplexes in the Heart of Ryde - Perfect for Investors & Developers

This property is a standout opportunity for visionary buyers and developers looking for a premium investment in a sought-after location. Nestled on a prestigious street lined with established luxury homes, the property is CDC-approved and thoughtfully designed to blend seamlessly with its natural surroundings while flooding the interiors with abundant natural light.

Calling all families and astute investors! Set on a lovely North rear facing block, this stunning and meticulously brick family home nestled in the highly sought-after suburb of Ryde. Occupying a approximately level 700sqm block, this

**Type** : House  
**Price** : For sale- \$2,300,000 -\$2,360,000  
**Land Size** : 673 sqm  
**View** : <https://www.uniland.com.au/sale/nsw/northern-suburbs/ryde/residential/house/8285507>

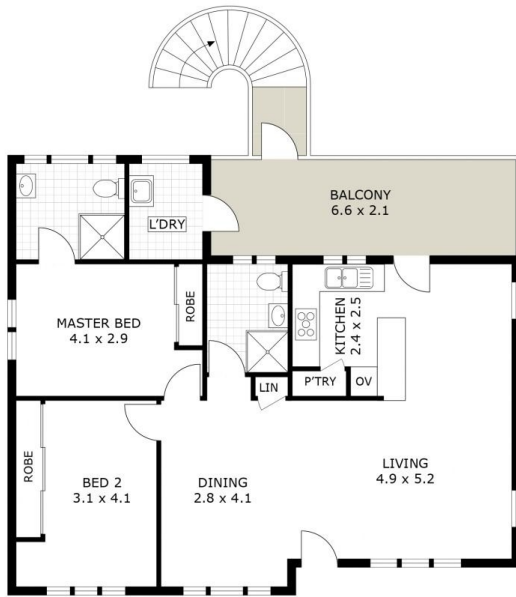


**Andy Lin**  
02 9869 7788

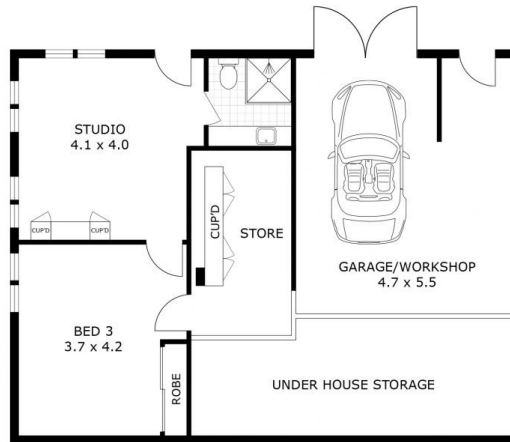


**Karen Ge**  
02 9869 7788

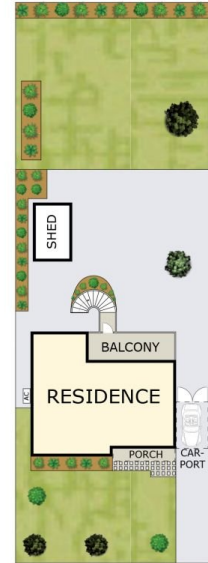
[For full version visit the website](https://www.uniland.com.au)



ENTRY LEVEL  
(GROUND LEVEL)



(LOWER GROUND LEVEL)



SITE PLAN (NOT TO SCALE)



Scale in metres. Indicative only. Dimensions are approximate.



DISCLAIMER: PLANS SHOWN ARE FOR MARKETING PURPOSES ONLY, ALL DIMENSIONS ARE APPROXIMATE AND NOT TO SCALE. THEY ARE SUBJECT TO ERRORS AND INACCURACIES AND NO LIABILITY WILL BE ACCEPTED. INTERESTED PARTIES SHOULD MAKE THEIR OWN INQUIRES.

13 Keppel Street, Ryde

