



22 Kandy Avenue Epping NSW

6  4  4 

Underscored by contemporary sophistication, this as-new full brick home exudes expansive proportions throughout every room. Constructed with pure quality, concrete slabs on both levels ensure superior living. Cutting-edge appointments innovate with electric blinds, curtains, and a next-generation V-Zug equipped kitchen. A second gas-equipped internal kitchen leads the way for effortless entertaining, enhanced by a wine bar, plus serveries placed inside and out.

Glistening within a north-to-rear setting, an inground pool is surrounded by alfresco spaces designed for minimal maintenance and maximum enjoyment. Boasting three ensuite bedrooms over both floors, including a grand master suite, a dedicated home office

[For full version visit the website](https://www.uniland.com.au)

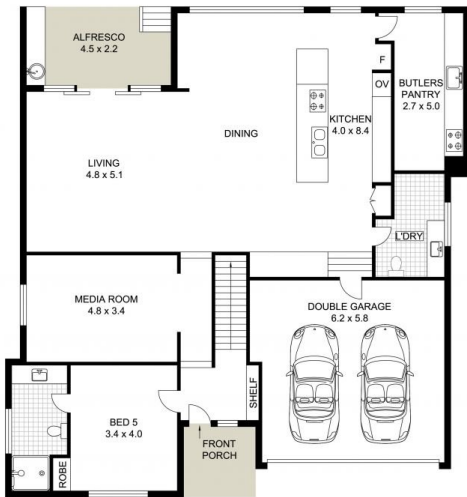
Type : House
Price : For Sale | Contact Agent
Land Size : 500.9 sqm
View : <https://www.uniland.com.au/sale/nsw/northern-suburbs/epping/residential/house/8282046>



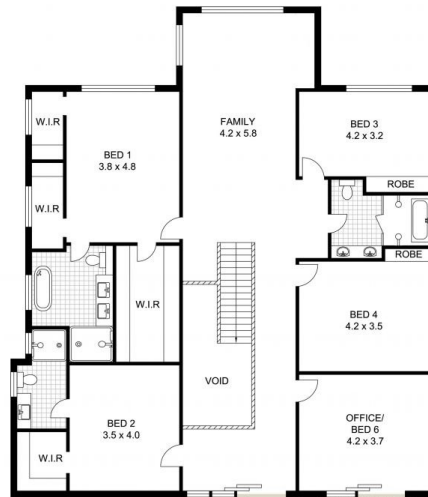
Andy Lin
02 9869 7788



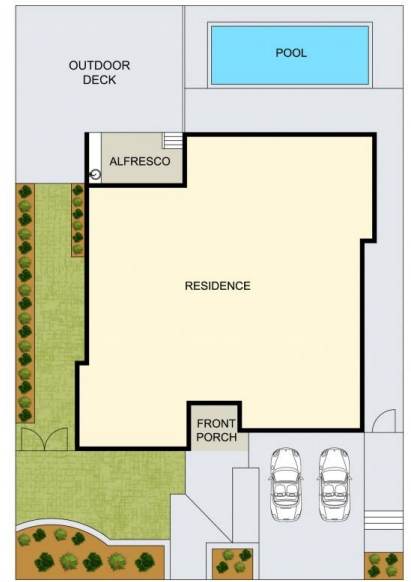
Vicky Ruan
02 9869 7788



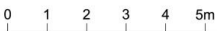
ENTRY LEVEL



UPPER LEVEL



SITE PLAN (NOT TO SCALE)



Scale in metres. Indicative only. Dimensions are approximate.

DISCLAIMER: PLANS SHOWN ARE FOR MARKETING PURPOSES ONLY, ALL DIMENSIONS ARE APPROXIMATE AND NOT TO SCALE. THEY ARE SUBJECT TO ERRORS AND INACCURACIES AND NO LIABILITY WILL BE ACCEPTED. INTERESTED PARTIES SHOULD MAKE THEIR OWN INQUIRES.



22 Kandy Avenue, Epping

