

15 Orchard Street Epping NSW

5 🛏 3 🚗 2 🚗

Architect-designed and flawlessly finished, this master-built residence enjoys a prized corner position within the catchment and within walking distance of Epping West Public School. Exuding sophistication and luxurious innovation, automated smart home technology features throughout this exceptional residence.

Introduced with a grand two-storey foyer, a seamless flow through formal and casual living zones is underpinned by a striking fireplace and chef's stone and gas kitchen. A third living space upstairs provides ultimate family flexibility, along with four generous bedrooms and a ground-floor study or fifth bedroom. Landscaped gardens, outdoor entertaining and a private backyard create the perfect backdrop for a lavish, family lifestyle moments from the centre of Carlingford and Epping.

Type : House
Price : \$ 2,643,888
Land Size : 380.3 sqm
View : <https://www.uniland.com.au/sale/nsw/northern-suburbs/epping/residential/house/8275055>

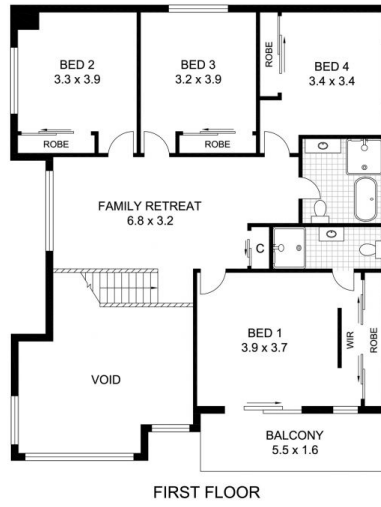
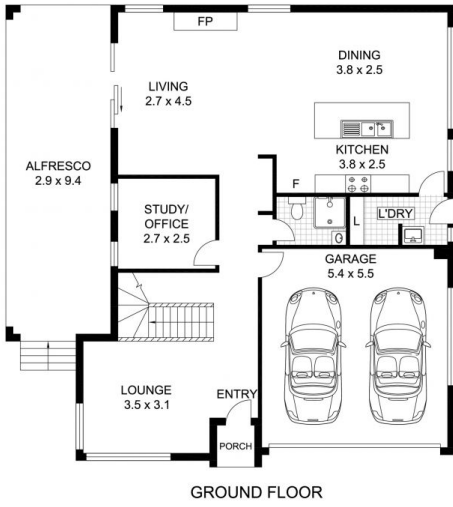


Andy Lin
02 9869 7788



Vicky Ruan
02 9869 7788

[For full version visit the website](https://www.uniland.com.au)



Scale in metres. Indicative only. Dimensions are approximate.

DISCLAIMER: PLANS SHOWN ARE FOR MARKETING PURPOSES ONLY, ALL DIMENSIONS ARE APPROXIMATE AND NOT TO SCALE. THEY ARE SUBJECT TO ERRORS AND INACCURACIES AND NO LIABILITY WILL BE ACCEPTED. INTERESTED PARTIES SHOULD MAKE THEIR OWN INQUIRES.



15 Orchard Street, Epping

