

10/13-17 Thallon Street Carlingford NSW

3  2  2 

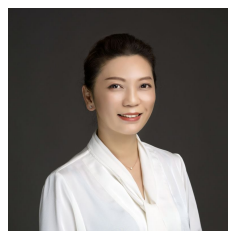
This rare full brick corner apartment with only one common wall offers a spacious North-Easterly aspect with a stunning private garden outlook. Positioned just 250m from Carlingford Light Rail, and within easy reach of Epping, Parramatta, Macquarie Uni, and premium schools including Carlingford West Catchment, James Ruse & The Kings School.

Type : Apartment
Price : \$ 900,000
Building Size : 154 sqm
View : <https://www.uniland.com.au/sale/nsw/northern-suburbs/carlingford/residential/apartment/8274978>

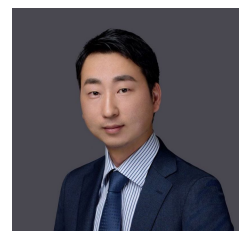
Property Highlights:

- Total 154sqm | 122sqm internal living + balcony | Double Lock-up Garage + Storage
- Sun-drenched open-plan living & dining flowing onto a private balcony
- 3 spacious bedrooms, 2 with built-ins, master with ensuite (all with a garden view)

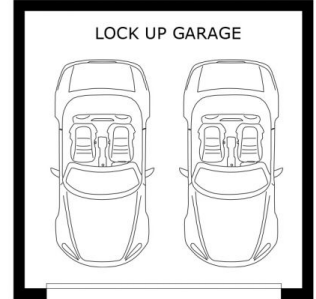
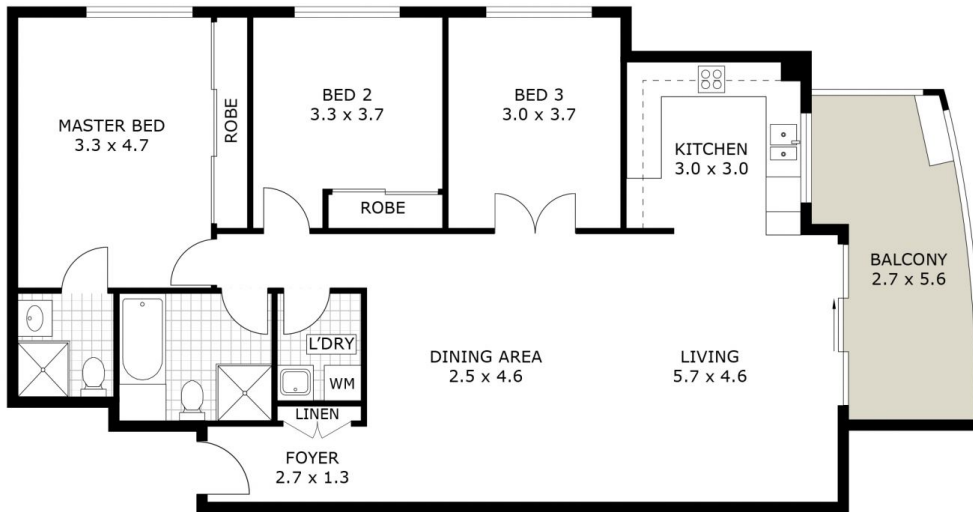
[For full version visit the website](https://www.uniland.com.au)



Karen Ge
02 9869 7788



Ti Zhou
02 9869 7788



0 1 2 3 4 5m

Scale in metres. Indicative only. Dimensions are approximate.



DISCLAIMER: PLANS SHOWN ARE FOR MARKETING PURPOSES ONLY, ALL DIMENSIONS ARE APPROXIMATE AND NOT TO SCALE. THEY ARE SUBJECT TO ERRORS AND INACCURACIES AND NO LIABILITY WILL BE ACCEPTED. INTERESTED PARTIES SHOULD MAKE THEIR OWN INQUIRES.

10/13-17 Thallon Street, carlingford

