



38 Magnolia Avenue Epping NSW

5 🛏 4 🚗 2 🚘

Brand new and flooded with abundant natural light welcome to 38 Magnolia Avenue in Epping an expansive 5-bedroom family residence and the blueprint for exceptional contemporary living.

With a commanding street presence and ultra-wide frontage this vast family home embraces an incredible sense of scale.

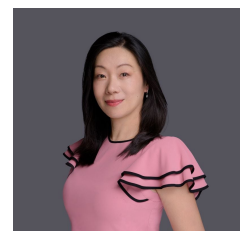
The soaring entry sweeps you past the media room and stunning powder room drawing you through the generous open plan where another double-height void accentuates that spacious ambience with a statement fireplace and graphic modern chandelier

The Miele kitchen extends into a butler's pantry with additional cooking facilities and the joinery continues into the dining with banks of illuminated cabinetry.

Type : House
Price : \$ 4,471,000
Land Size : 765.1 sqm
View : <https://www.uniland.com.au/sale/nsw/northern-suburbs/epping/residential/house/8274737>



Andy Lin
02 9869 7788

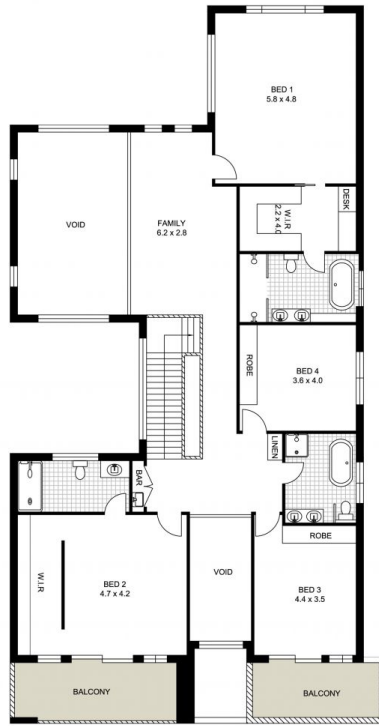


Julie Zhang
02 9869 7788

[For full version visit the website](https://www.uniland.com.au)



GROUND FLOOR



FIRST FLOOR



SITE PLAN (NOT TO SCALE)



0 1 2 3 4 5m

Scale in metres. Indicative only. Dimensions are approximate.

DISCLAIMER: PLANS SHOWN ARE FOR MARKETING PURPOSES ONLY. ALL DIMENSIONS ARE APPROXIMATE AND NOT TO SCALE. THEY ARE SUBJECT TO ERRORS AND INACCURACIES AND NO LIABILITY WILL BE ACCEPTED. INTERESTED PARTIES SHOULD MAKE THEIR OWN INQUIRES.

38 Magnolia Avenue, Epping

