



38 Harley Crescent Eastwood NSW

5 🛏 3 🚿 2 🚗

Position, proximity and palatial proportions define this impeccably presented high-set, dual-level brick home. A peaceful cul-de-sac setting creates a secure haven surrounded by quality properties and friendly neighbours within a short, leisurely stroll of Eastwood shopping precinct and the train station.

Immersed with space and natural light, uplifted interiors create a calming ambience with polished wood floors luxuriously connecting formal lounge and dining rooms, complemented by family living and casual meals. Renovated and designed to pure perfection, a kitchen with top-tier appliances excels with a central stone island award style and functionality. Refined outdoor living opens to a picturesque backyard where an expertly maintained

Type : House
Price : For Sale - Contact Agent
Land Size : 657.6 sqm
View : <https://www.uniland.com.au/sale/nsw/northern-suburbs/eastwood/residential/house/8274722>

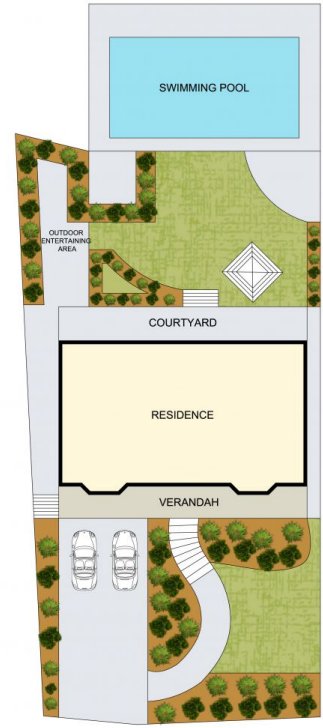
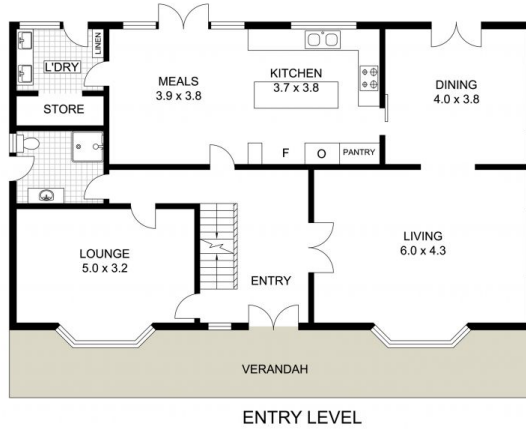
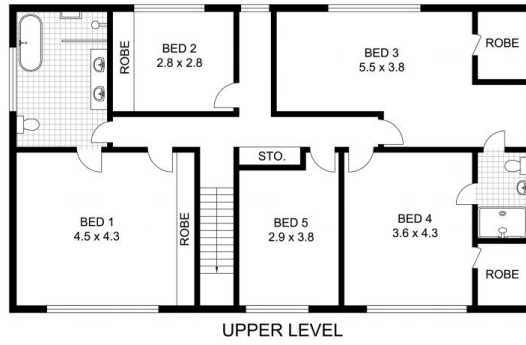
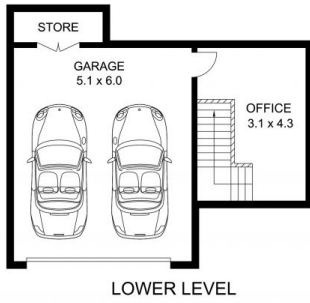


Andy Lin
02 9869 7788



Karen Ge
02 9869 7788

[For full version visit the website](https://www.uniland.com.au)



0 1 2 3 4 5m
Scale in metres. Indicative only. Dimensions are approximate.

DISCLAIMER: PLANS SHOWN ARE FOR MARKETING PURPOSES ONLY, ALL DIMENSIONS ARE APPROXIMATE AND NOT TO SCALE. THEY ARE SUBJECT TO ERRORS AND INACCURACIES AND NO LIABILITY WILL BE ACCEPTED. INTERESTED PARTIES SHOULD MAKE THEIR OWN INQUIRES.



38 Harley Crescent, Eastwood

