



69 Lovell Road Denistone East NSW

5 🏠 4 🚗 2 🚗

Absolutely stunning new home located in a highly sought-after pocket of the leafy northern suburb of Denistone East. Ideally in architecture and perfect for the busy professional family who love to entertain or the multigenerational family looking for ultimate comfort and style, this home provides the wow factor at every step!

The location is also excellent with Denistone East Public School catchment. Surrounded by parks, playgrounds, great eateries. Local shops and transport is all moments away, short drive to Macquarie and Top Ryde Shopping Centre with easy access to Sydney's CBD and with a home like this you can enjoy it all in absolute style.

Main Features:

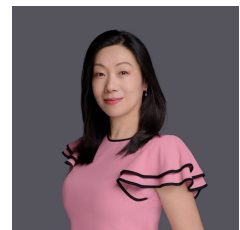
* New home with Contemporary architectural design

[For full version visit the website](https://www.uniland.com.au)

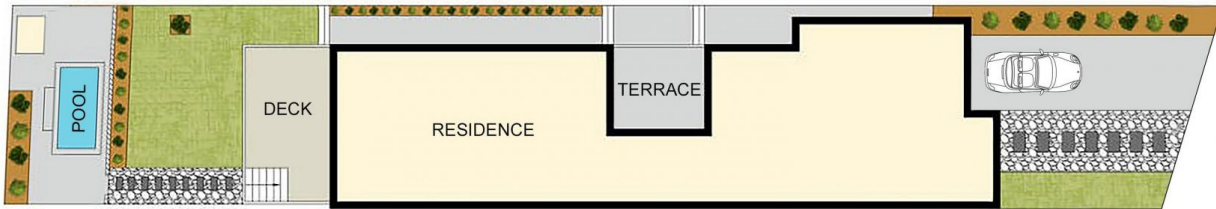
Type : Semi Detached
Land Size : 348 sqm
View : <https://www.uniland.com.au/sale/nsw/northern-suburbs/denistone-east/residential/semi-detached/8274507>



Andy Lin
02 9869 7788



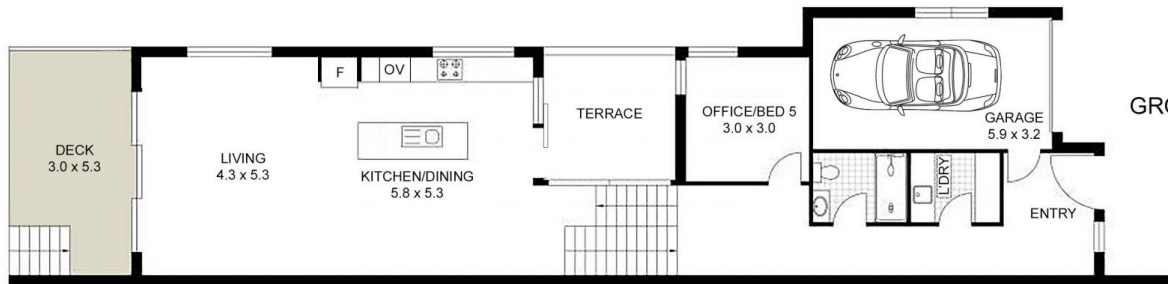
Julie Zhang
02 9869 7788



SITE PLAN
(NOT TO SCALE)



FIRST FLOOR



GROUND FLOOR



DISCLAIMER: PLANS SHOWN ARE FOR MARKETING PURPOSES ONLY, ALL DIMENSIONS ARE APPROXIMATE AND NOT TO SCALE. THEY ARE SUBJECT TO ERRORS AND INACCURACIES AND NO LIABILITY WILL BE ACCEPTED. INTERESTED PARTIES SHOULD MAKE THEIR OWN INQUIRES.

69 Lovell Road, Denistone East

