



6/10-14 Robert Street Telopea NSW

2  1  1 

Nestled in a boutique complex close to all amenities, this two-bedroom townhouse offers an effortless lifestyle with modern finishes and low-maintenance living. Perfectly suited for first home buyers, downsizers, young families, or savvy investors, this home combines comfort, convenience, and style in a highly sought-after location.

Type : Townhouse
Price : \$ 720,000
Building Size : 120 sqm
View : <https://www.uniland.com.au/sale/nsw/parramatta/telopea/residential/townhouse/8196291>

Key Features:

- North-Facing Gem: Solid full-brick construction with front and back paved courtyards, ideal for entertaining or relaxing.
- Bright & Airy Living Space: Open-plan dining and living area with abundant natural light.
- Modern Kitchen: Caesarstone benchtops, ample storage, and updated appliances for effortless meal preparation.

[For full version visit the website](https://www.uniland.com.au)



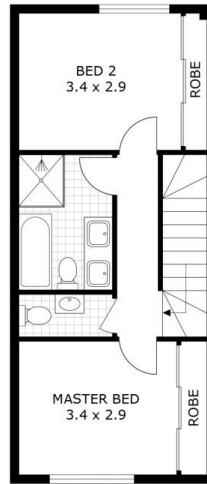
Andy Lin
02 9869 7788



Ti Zhou
02 9869 7788

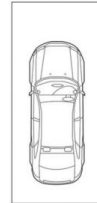


GROUND FLOOR



FIRST FLOOR

SINGLE GARAGE
2.5m x 5.5m



Scale in metres. Indicative only. Dimensions are approximate.



DISCLAIMER: PLANS SHOWN ARE FOR MARKETING PURPOSES ONLY, ALL DIMENSIONS ARE APPROXIMATE AND NOT TO SCALE. THEY ARE SUBJECT TO ERRORS AND INACCURACIES AND NO LIABILITY WILL BE ACCEPTED. INTERESTED PARTIES SHOULD MAKE THEIR OWN INQUIRES.

6/10-14 Robert Street, Telopea

