



**72 Trelawney Street Eastwood NSW**

6  4  2 

Holding over 1783 sqm (approx.) in one of Eastwoods best positions, welcome to 72 trelawney St where expansive views meet endless opportunities.

Arriving to this peaceful haven nothing can prepare you for the incredible vantage.

The sprawling block frames an expansive vista stretching from the sparkling city skyline across to Olympic Park and beyond.

It is truly captivating and with an approved DA for a duplex this site represents an unrivalled proposition.

Currently the dual level double brick home is comprised of

[For full version visit the website](https://www.uniland.com.au)

**Type** : House  
**Land Size** : 1783 sqm  
**View** : <https://www.uniland.com.au/sale/nsw/northern-suburbs/eastwood/residential/house/8167445>



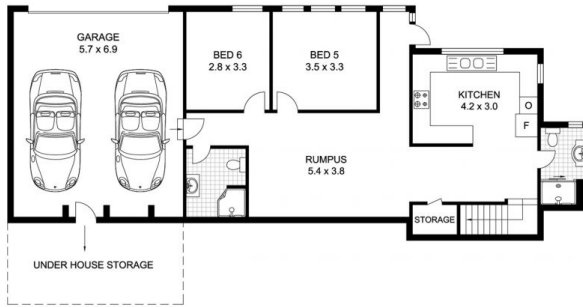
**Andy Lin**  
02 9869 7788



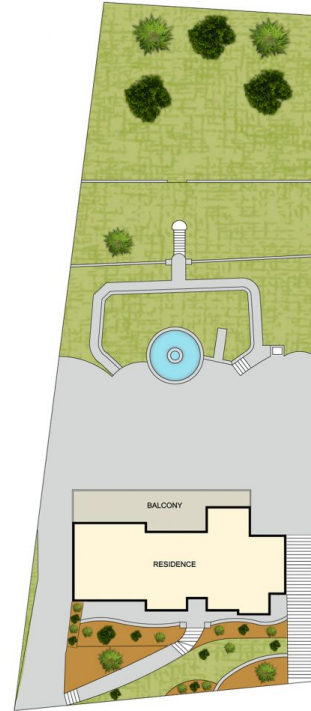
**Kris Yu**  
02 9869 7788



ENTRY LEVEL



LOWER LEVEL



SITE PLAN (NOT TO SCALE)



**DISCLAIMER:** PLANS SHOWN ARE FOR MARKETING PURPOSES ONLY, ALL DIMENSIONS ARE APPROXIMATE AND NOT TO SCALE. THEY ARE SUBJECT TO ERRORS AND INACCURACIES AND NO LIABILITY WILL BE ACCEPTED. INTERESTED PARTIES SHOULD MAKE THEIR OWN INQUIRES.



72 Trelawney Street, Eastwood

