



**215/2-8 Hazlewood Place Epping NSW**

1  1  1 

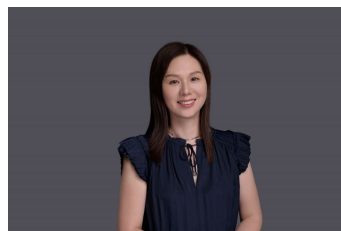
Situated on the quite street with a generous floorplan, this perfect-maintained apartment offers area views and modern contemporary features throughout.

**Features:**

- Modern one bedroom apartment
- Open living and dining area flowing onto the balcony
- Granite open plan kitchen with gas cooking & dishwasher
- Light filled living areas
- Spacious bedroom with built-in robe
- Dual access bathroom, en-suite style
- Extra large bathroom with ample storage space
- Internal laundry with dryer
- Private sunny Balcony
- Ducted air-conditioning, security video intercom, lift

**Type** : Apartment

**View** : <https://www.uniland.com.au/lease/nsw/northern-suburbs/epping/residential/apartment/8160920>



**Sunny Tang**  
02 9869 7788



**Linda Bo**  
02 9869 7788

[For full version visit the website](https://www.uniland.com.au)