






Level 3/306/23 Hassall Street Parramatta NSW

2  2  1 

Located in level 3 of " The Galleria" in the heart of Parramatta CBD, this modern 2 bedroom apartment offers a spacious layout, neutral contemporary tone and quality finishes and appliances, it is conveniently positioned within short stroll to schools, train station , bus interchange, Westfield, Parramatta Square, trendy restaurants and cafes.

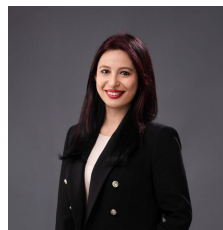
This bright and cozy apartment is s a perfect city pad for those seeking ultra convenience, modern lifestyle or no vacancy rate investment.

Main Features:

- Open plan living and dining expanding to large east aspect balcony

[For full version visit the website](https://www.uniland.com.au)

Type : Apartment
Building Size : 103 sqm
View : <https://www.uniland.com.au/lease/nsw/parramatta/parramatta/residential/apartment/8021918>



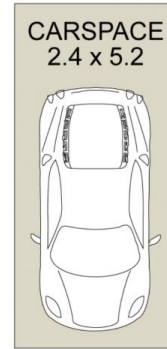
Nabanita Banerjee
02 9869 7788



Linda Bo
02 9869 7788



LEVEL 3



BASEMENT 4



Disclaimer: Drawing not to scale. Please note that while the information contained in this floorplan is provided by reliable sources, we cannot guarantee its accuracy. It is intended as a guide. Interested parties should rely on their own enquiry

306/23 Hassall Street, Parramatta

