






502/26 Cambridge Street Epping NSW

2  2  1 

Nestled serenely in level 5 of this landmark building at heart of Epping, this two-bedroom apartment offers a tranquil east-facing setting just minutes away from Epping Metro Station. Within easy walking distance to Epping Public School, Essex Street Kindy, and convenient transport links to Epping Boys, Macquarie Centre, and Macquarie University.

Type : Apartment
Price : \$ 820,000
Land Size : 103 sqm
View : <https://www.uniland.com.au/sale/nsw/northern-suburbs/epping/residential/apartment/8004614>

Living in this superb residence, you are immersed in its abundant natural light, magnificent view and ultra convenience every day. Featuring two large bedrooms, master ensuite, built-ins, open kitchen, a light drenched combined living and dining area. Secure car space and a large storage unit. This is a fantastic opportunity for first home buyers, young families, investors and downsizers.

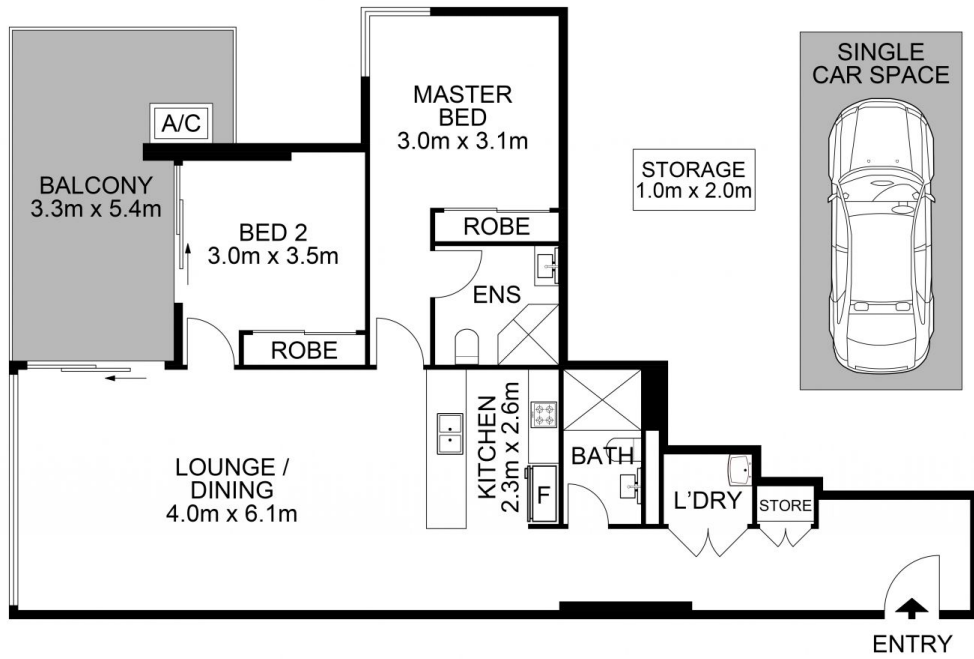
[For full version visit the website](https://www.uniland.com.au)



Andy Lin
02 9869 7788



Kris Yu
02 9869 7788



0 1 2 3 4 5
Scale in metres. Indicative only. Dimensions are approximate.



DISCLAIMER: PLANS SHOWN ARE FOR MARKETING PURPOSES ONLY. ALL DIMENSIONS ARE APPROXIMATE AND NOT TO SCALE. THEY ARE SUBJECT TO ERRORS AND INACCURACIES AND NO LIABILITY WILL BE ACCEPTED. INTERESTED PARTIES SHOULD MAKE THEIR OWN INQUIRES.

502/26 Cambridge Street, Epping

