





1/210 Pennant Hills Road Oatlands NSW

4  2  1 

Nestled at the front of the complex, located in the small but highly sought-after suburb of Oatlands, this tri-level townhouse seamlessly blends modern lifestyle with cozy comfort. The charming weathered wooden door invites you into a leafy alley, leading the way to the front door in a serene setting. Once inside, you will feel welcomed with light-filled open-plan living and dining, extending to the low-maintenance backyard for effortless entertaining.

Ascend the attractive wooden staircase to find the 3 spacious bedrooms, each with built-in robes and a modern bathroom. The most delightful surprise awaits on the top level, offering the massive master room with unique character and two secluded areas, ready to spark your imagination.

Within the catchment for Cumberland High School,

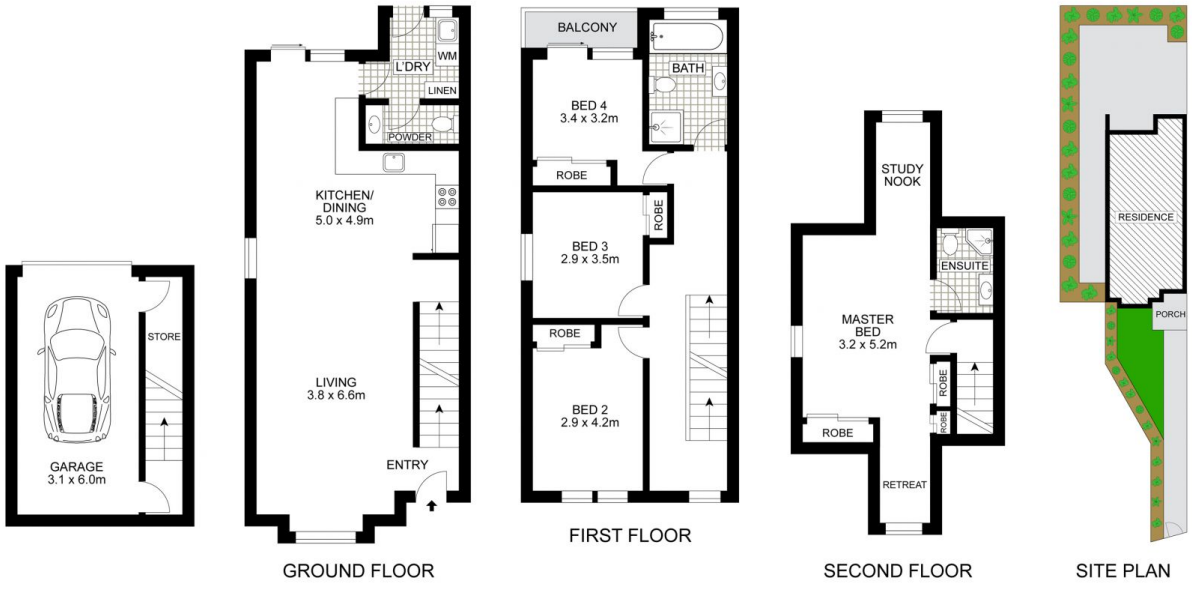
Price : Just Listed!
Building Size : 305 sqm
View : <https://www.uniland.com.au/sale/nsw/parramatta/oatlands/residential/townhouse/7990349>



Annie Zeng
02 9869 7788



Ben Zheng
02 9869 7788



Disclaimer: Drawing not to scale. Please note that while the information contained in this floorplan is provided by reliable sources, we cannot guarantee its accuracy. It is intended as a guide. Interested parties should rely on their own enquiry

1/210 Pennant Hills Road, Oatlands

