



7/50-54 Cambridge Street Epping NSW

4 🛏 3 🚗 2 🚗

Calling all families and astute investors!
AUCTION 16th May 6:30PM, THE EPPING CLUB (45-47 RAWSON STREET, EPPING)

A magnificent residence of unbeatable quality and unparalleled location settings. Enjoying a wonderful lifestyle at Epping, this stunning Five Beds plus study townhouse showcases a fabulous design. Perfect aspect with an abundance of natural light and comfortable living which instantly appeal to young families and downsizers. Everything you can think of, schools, transportation, shopping and entertainment, restaurants, parks are ALL within minutes' walk.

Main features:
 -Sun-drenched and spacious open-plan living and dining area

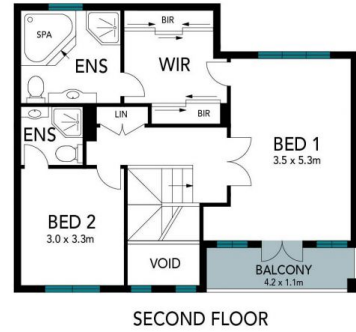
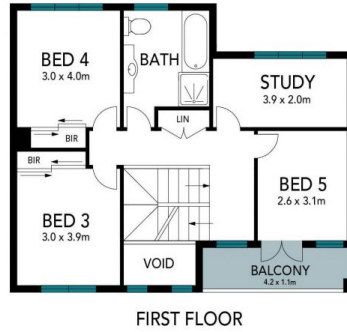
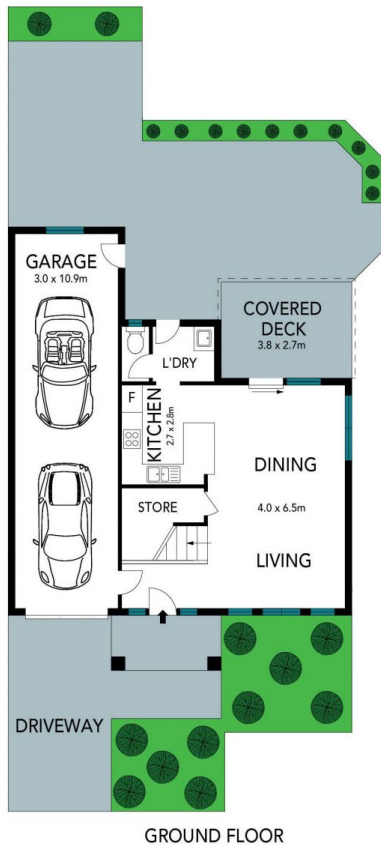
Price : Auction
Land Size : 295 sqm
View : <https://www.uniland.com.au/sale/nsw/northern-suburbs/epping/residential/townhouse/7990321>



Kris Yu
02 9869 7788



Andy Lin
02 9869 7788



Disclaimer: Drawing not to scale. Please note that while the information contained in this floorplan is provided by reliable sources, we cannot guarantee its accuracy. It is intended as a guide. Interested parties should rely on their own enquiry

7/50-54 Cambridge Street, Epping

