






1260 Pacific Highway Turramurra NSW

5  5  4 

Calling all families and astute investors!

AUCTION 20th June 6:30PM, THE EPPING CLUB (45-47 RAWSON STREET, EPPING)

Brand new and representing bold contemporary architecture welcome to number 1260 pacific highway in Turramurra an expansive 5 bedroom, 5 bathroom family haven with all the space and Luxury you will ever need.

With a double brick and concrete slab construction and bordering a nature reserve the outlook of greenery is such a welcome surprise and these voluminous interiors are just breathtaking.

Set on close to 900sm the design wraps around a central pool with endless living zones to retreat to and there is a

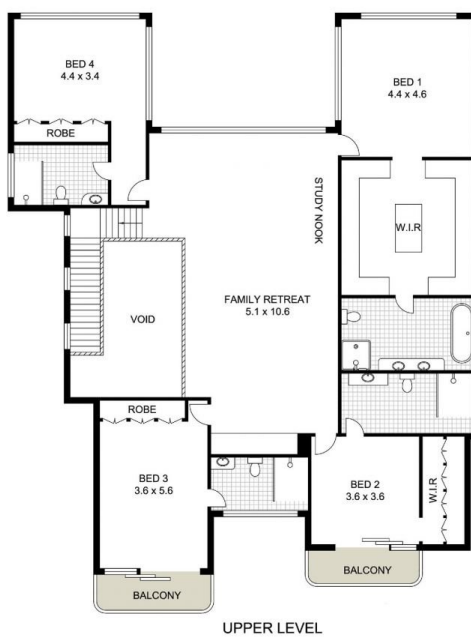
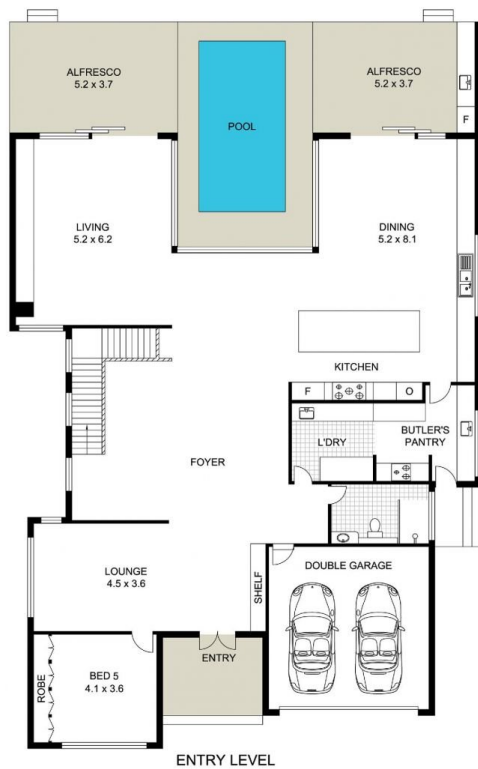
Price : Auction
Land Size : 892 sqm
View : <https://www.uniland.com.au/sale/nsw/north-shore-upper/turramurra/residential/house/7990095>



Andy Lin
02 9869 7788



Karen Ge
02 9869 7788



0 1 2 3 4 5m

Scale in metres. Indicative only. Dimensions are approximate.

DISCLAIMER: PLANS SHOWN ARE FOR MARKETING PURPOSES ONLY, ALL DIMENSIONS ARE APPROXIMATE AND NOT TO SCALE. THEY ARE SUBJECT TO ERRORS AND INACCURACIES AND NO LIABILITY WILL BE ACCEPTED. INTERESTED PARTIES SHOULD MAKE THEIR OWN INQUIRES.



1260 Pacific Highway, Turramurra

Uniland
Real Estate