



**46 Rosebrook Avenue Kellyville Ridge NSW**

4  2  2 

Beautifully presented double storey house with quality modern finishing's throughout. Situated in a newly developed area Kellyville Ridge where you can enjoy the benefits of being close to bus stops, The Ponds Shopping Centre, Stanhope Village Shopping Centre, Blacktown Leisure Centre and a short drive to Rouse Hill Town Centre and the North West Train Line. Zoned for John Palmer Primary School, The Ponds High School and John XXIII & St Marks College.

**Land Size** : 311.8 sqm  
**View** : <https://www.uniland.com.au/lease/nsw/hills/kellyville-ridge/residential/house/7980048>

This stunning residence offers the perfect balance between space, location and style offering multiple living areas, opposite the park and showcasing modern features throughout.

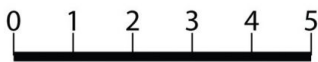
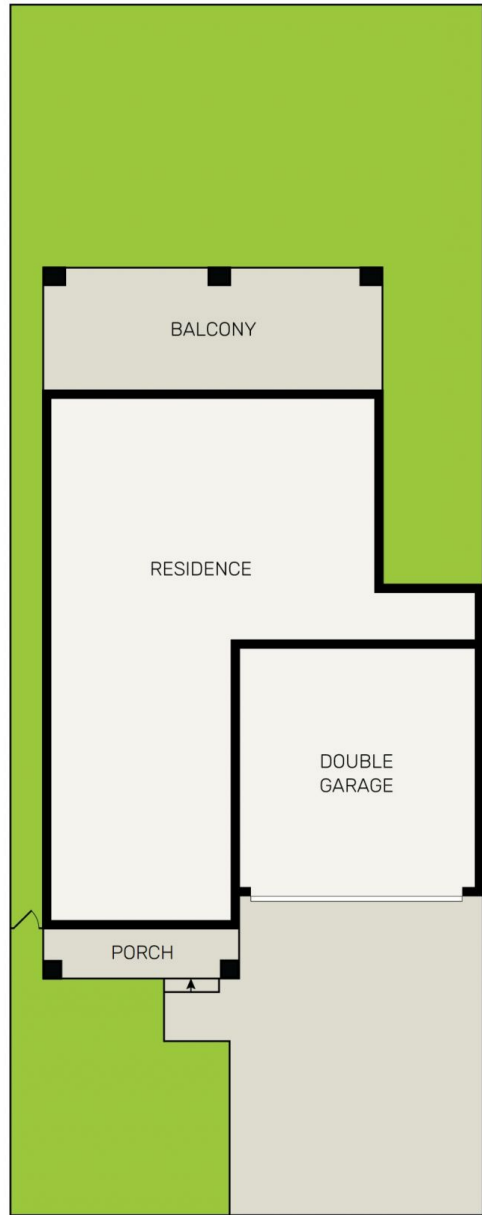
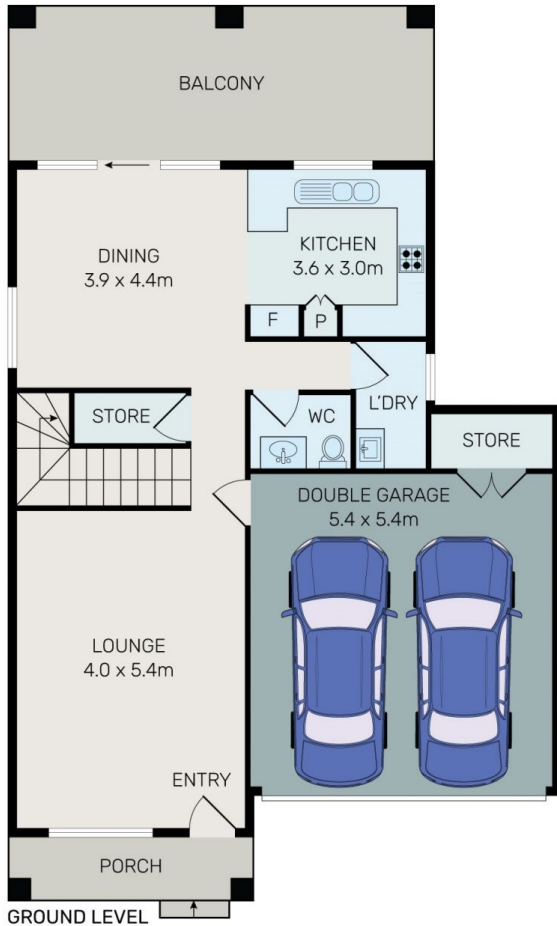
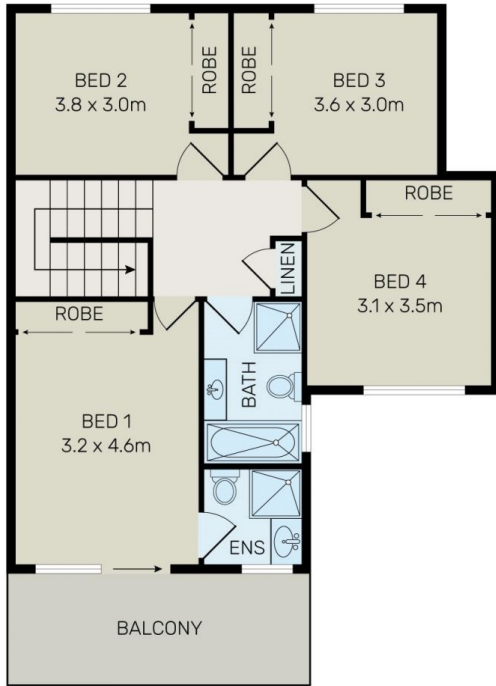


**Lisa Liu**  
02 9869 7788



**Linda Bo**  
02 9869 7788

Key features include:



All information contained herein is gathered from all sources we believe to be reliable. However we cannot guarantee its accuracy and interested parties should rely on their own enquiries.



# 46 Rosebrook Avenue, Kellyville Ridge