






G01/5 Belmont Avenue Wollstonecraft NSW

3  2  2 

Nestled in a tranquil part of Wollstonecraft, mere steps from the station, this luxurious 3 bedroom apartment situated within "The Belmont" is a true gem. Its state of art design and upscale finishes create an elegant ambiance. Enjoy serene views from the living room, which seamlessly connects to a spacious courtyard via large sliding doors, giving it a house-like feel. The spacious bedrooms, with their floor-to-ceiling windows, add to the sense of space and provide a peaceful retreat for relaxation and entertainment.

Enjoy a leisurely stroll from Wollstonecraft Station for easy city access, while close to Crows Nest village shops, cafes and restaurants, this apartment makes it ideal for those who cherish tranquility yet crave the vibrancy of city life.

Type : Apartment

View : <https://www.uniland.com.au/sale/nsw/north-shore-lower/wollstonecraft/residential/apartment/7978362>

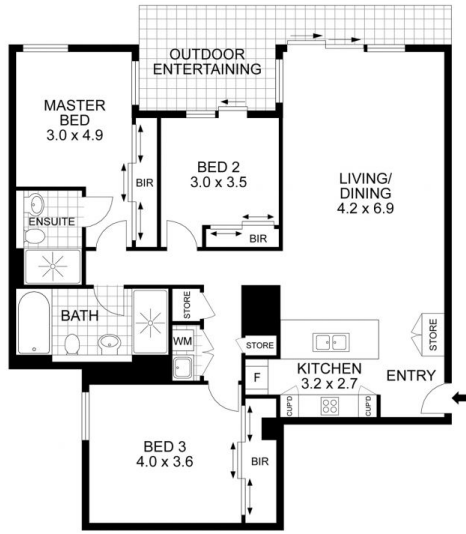


Annie Zeng
0416 822 502

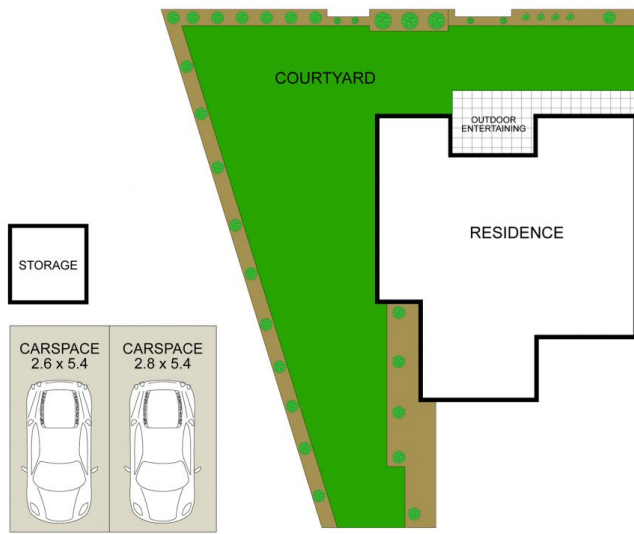


Ben Zheng
02 9869 7788

[For full version visit the website](https://www.uniland.com.au)



GROUND FLOOR



SITE PLAN



Living Area: 326 sqm
 Carspace + Storage: 33 sqm
 Total Size: 359 sqm

Disclaimer: Drawing not to scale. Please note that while the information contained in this floorplan is provided by reliable sources, we cannot guarantee its accuracy. It is intended as a guide. Interested parties should rely on their own enquiry

G01/5 Belmont Avenue, Wollstonecraft

