



**20 Lowanna Avenue Baulkham Hills NSW**

5  3  2 

Nestled in the heart of Crestwood, this exquisite two-level residence exudes elegance and functionality, offering the perfect haven for a growing or multi-generational family. Positioned on the high side of the street in a serene and family-friendly locale, this home welcomes you with impeccably manicured gardens, setting the tone for the warmth and comfort that awaits within.

Step inside to discover a thoughtfully designed layout boasting four generously sized bedrooms, each appointed with robes for added convenience. An additional home office presents the possibility of a fifth bedroom, catering to the evolving needs of modern families. Upstairs, a private retreat awaits, complete with a bedroom featuring its own ensuite, a family lounge, and a convenient kitchenette, ideal for accommodating multi-generational living or hosting family guests in style.

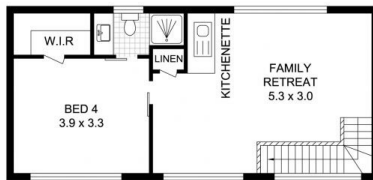
**Price** : Auction  
**Land Size** : 993 sqm  
**View** : <https://www.uniland.com.au/sale/nsw/hills/baulkham-hills/residential/house/7977600>



**Andy Lin**  
02 9869 7788



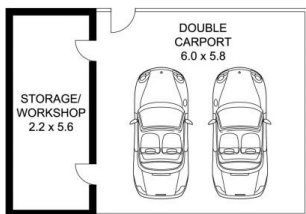
**Vicky Ruan**  
02 9869 7788



UPPER LEVEL



ENTRY LEVEL



SITE PLAN (NOT TO SCALE)

0 1 2 3 4 5m

Scale in metres. Indicative only. Dimensions are approximate.

DISCLAIMER: PLANS SHOWN ARE FOR MARKETING PURPOSES ONLY, ALL DIMENSIONS ARE APPROXIMATE AND NOT TO SCALE. THEY ARE SUBJECT TO ERRORS AND INACCURACIES AND NO LIABILITY WILL BE ACCEPTED. INTERESTED PARTIES SHOULD MAKE THEIR OWN INQUIRES.



20 Lowanna Avenue, Baulkham Hills

