

51A O'Keefe Crescent Eastwood NSW

5 🛏 4 🚗 2 🚗

Absolutely stunning double storey home located in a highly sought-after street of the leafy northern suburb of Eastwood. Ideally in architecture and perfect for the professional family who love to entertain or the multigenerational family looking for ultimate comfort and style, this home provides the wow factor at every step!

Price : Auction this Sunday 5th May 11:45am
Land Size : 348 sqm
View : <https://www.uniland.com.au/sale/nsw/northern-suburbs/eastwood/residential/semi-detached/7977583>

The location is also excellent with Denistone East Public School and Epping boy high school catchment. Surrounded by parks, playgrounds, great eateries, and easy access to Eastwood station and shop, only a minute's drive to Macquarie metro and shopping center.

Main Features:

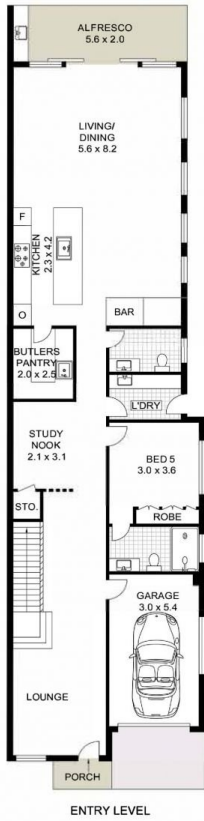
- * High quality built with full brick and concrete slab
- * Sun-drenched and spacious open-plan living and dining



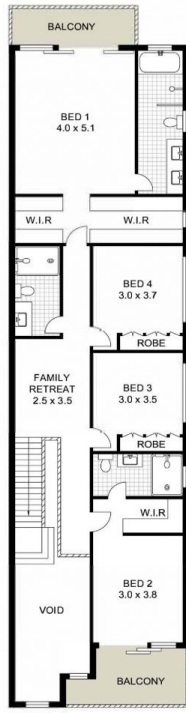
Andy Lin
02 9869 7788



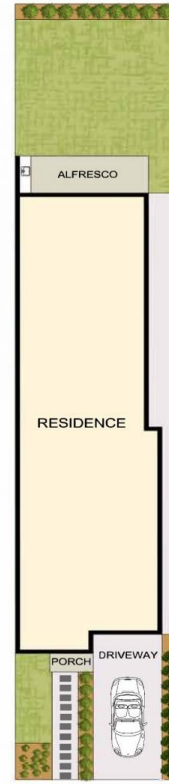
Kris Yu
02 9869 7788



ENTRY LEVEL



UPPER LEVEL



SITE PLAN (NOT TO SCALE)

0 1 2 3 4 5m

Scale in metres. Indicative only. Dimensions are approximate.

DISCLAIMER: PLANS SHOWN ARE FOR MARKETING PURPOSES ONLY, ALL DIMENSIONS ARE APPROXIMATE AND NOT TO SCALE. THEY ARE SUBJECT TO ERRORS AND INACCURACIES AND NO LIABILITY WILL BE ACCEPTED. INTERESTED PARTIES SHOULD MAKE THEIR OWN INQUIRES.



51A O'Keefe Crescent, Eastwood

