






2 Yarwood Street Marsfield NSW

4  3  6 

Set on over 389 Sqm of level elevated land, welcome to this brand new full concrete, architecturally designed home provides luxury living at its finest.

Ideally in architecture, "form follows function." Upon entering this stunning new home, the home features everything you could possibly desire in a home. Four generous sized bedrooms, Three full bathrooms featuring heated flooring, indoor entertaining spaces, Six car basement parking spaces, a manicured backyard with a covered entertaining area and In ground Mosaic tiled pool. This home is sure to create the ultimate sanctuary. Showcasing bespoke designer opulence, lavish proportions and the finest finishes currently available.

Main Features:

* Sun-drenched living & dining zones designed to keep the

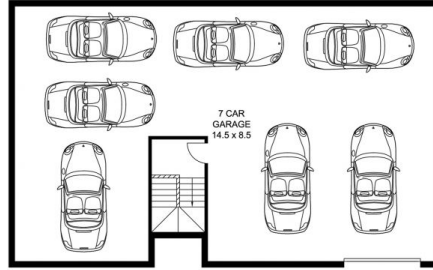
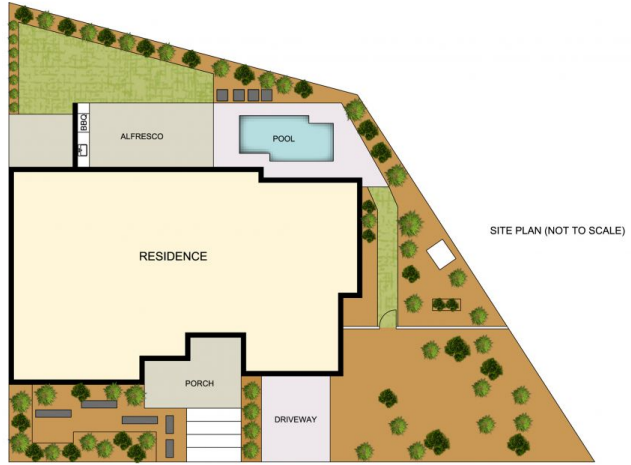
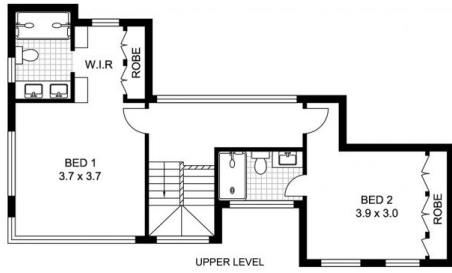
Price : Just listed
Land Size : 389.7 sqm
View : <https://www.uniland.com.au/sale/nsw/northern-suburbs/marsfield/residential/semi-detached/7974908>



Andy Lin
02 9869 7788



Bryan Peng
(02) 9869 7788



0 1 2 3 4 5m

Scale in metres. Indicative only. Dimensions are approximate.

DISCLAIMER: PLANS SHOWN ARE FOR MARKETING PURPOSES ONLY. ALL DIMENSIONS ARE APPROXIMATE AND NOT TO SCALE. THEY ARE SUBJECT TO ERRORS AND INACCURACIES AND NO LIABILITY WILL BE ACCEPTED. INTERESTED PARTIES SHOULD MAKE THEIR OWN INQUIRES.



2 Yarwood Street, Marsfield

