



31 Raymond Street Eastwood NSW

5  3  2 

Welcome to a world of contemporary indulgence within this exceptional residence, perfectly situated in a highly sought-after location, immerse yourself in a bright and spacious interior that effortlessly combines comfort and style, setting the stage for discerning buyers seeking a truly elevated living experience. Enjoy the utmost convenience with schools, parks, shops, and transport options all in close proximity, ensuring that every necessity is easily within reach.

Main features:

- Be captivated by the contemporary gourmet gas kitchen, boasting high-end appliances and a sprawling island bench
- Embrace the sleek elegance of timber floorboards upstairs,

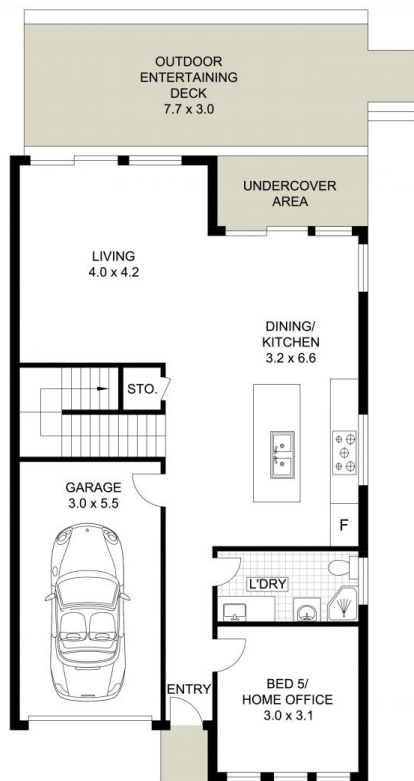
Land Size : 313 sqm
View : <https://www.uniland.com.au/lease/nsw/north-ern-suburbs/eastwood/residential/semi-detached/7969794>



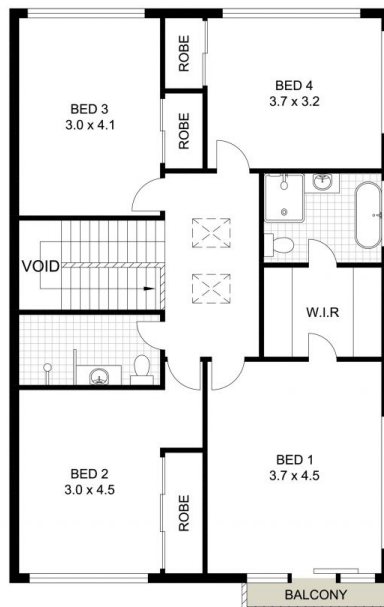
Sammi Sun
02 9869 7788



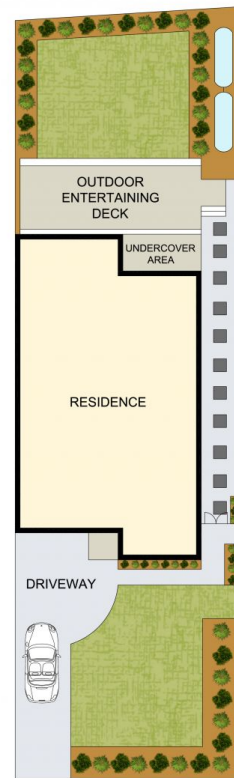
Linda Bo
02 9869 7788



ENTRY LEVEL



UPPER LEVEL



SITE PLAN (NOT TO SCALE)



DISCLAIMER: PLANS SHOWN ARE FOR MARKETING PURPOSES ONLY, ALL DIMENSIONS ARE APPROXIMATE AND NOT TO SCALE. THEY ARE SUBJECT TO ERRORS AND INACCURACIES AND NO LIABILITY WILL BE ACCEPTED. INTERESTED PARTIES SHOULD MAKE THEIR OWN INQUIRES.

31 Raymond Street, Eastwood

