



8/684-686 Victoria Road Ermington NSW

3  **2**  **2** 

Peacefully located at a leafy complex, this stunning villa offers low-maintenance comfort and a functional layout with easy in/out flow to serene entertaining, Within a short distance of public transport, it further benefits from immense public and retail amenities within proximity.

Price : \$ 1,030,000
Land Size : 221 sqm
View : <https://www.uniland.com.au/sale/nsw/parra-matta/ermington/residential/villa/7969222>

Main features:

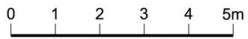
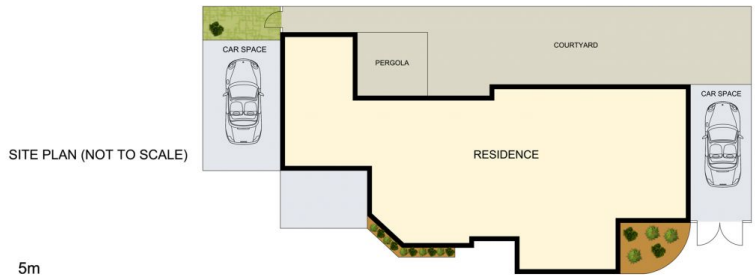
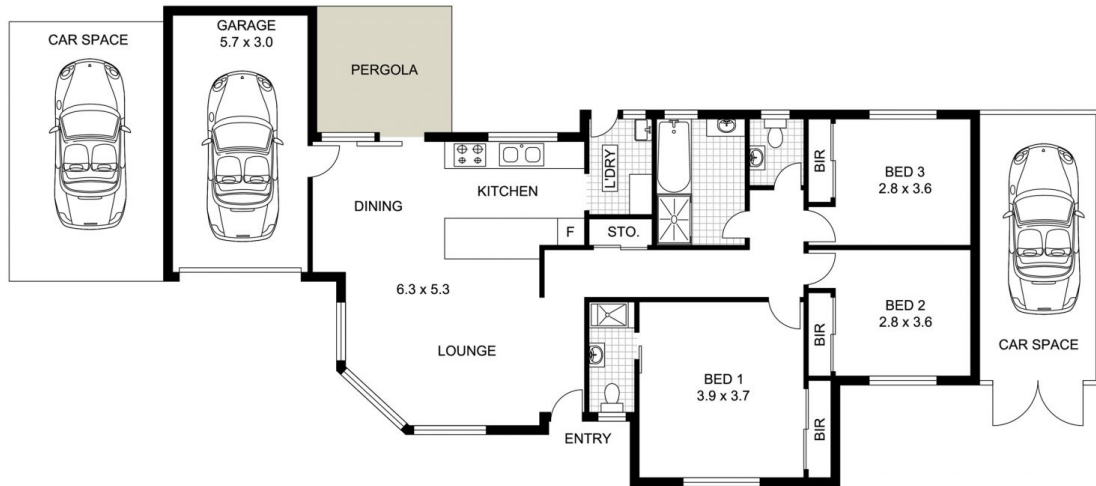
- Sun-drenched and spacious open-plan living and dining area
- Gourmet kitchen with gas cooking, quality appliances and ample storage
- Three generously sized bedrooms, master with ensuite
- Family-sized bathroom with floor-to-ceiling tile, extra powder room
- Easy to maintain fully paved backyard, great for children to play or entertain.
- Lock-up garage plus car space beside garage and enough



Andy Lin
02 9869 7788



Kris Yu
02 9869 7788



Scale in metres. Indicative only. Dimensions are approximate.

DISCLAIMER: PLANS SHOWN ARE FOR MARKETING PURPOSES ONLY, ALL DIMENSIONS ARE APPROXIMATE AND NOT TO SCALE. THEY ARE SUBJECT TO ERRORS AND INACCURACIES AND NO LIABILITY WILL BE ACCEPTED. INTERESTED PARTIES SHOULD MAKE THEIR OWN INQUIRIES.

8/684-686 Victoria Road, Ermington

