



21 Wylde Street Telopea NSW

3  1  1 

Nestled in the blue ribbon locale of Telopea, adjacent to serene Oatlands, this charming 3-bedroom classic beauty sits on the high side of a peaceful cul-de-sac, sprawling across 658sqm of land. Enjoying unrivaled privacy and tranquility, the property boasts modern upgrades including a renovated kitchen and tidy bathroom, while a separate one-bedroom studio offers versatile living options or rental income.

With its prime location only 600m to the future light rail, schools and playground and development potential (S.T.C.A), this residence presents a rare opportunity for both comfortable living and future investment.

Main Features:

- 658sqm block on the elevated side offering unparalleled

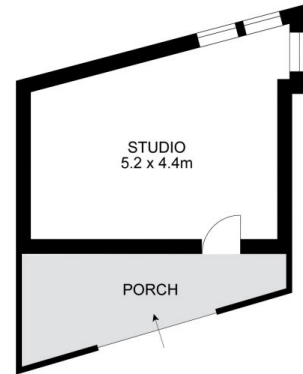
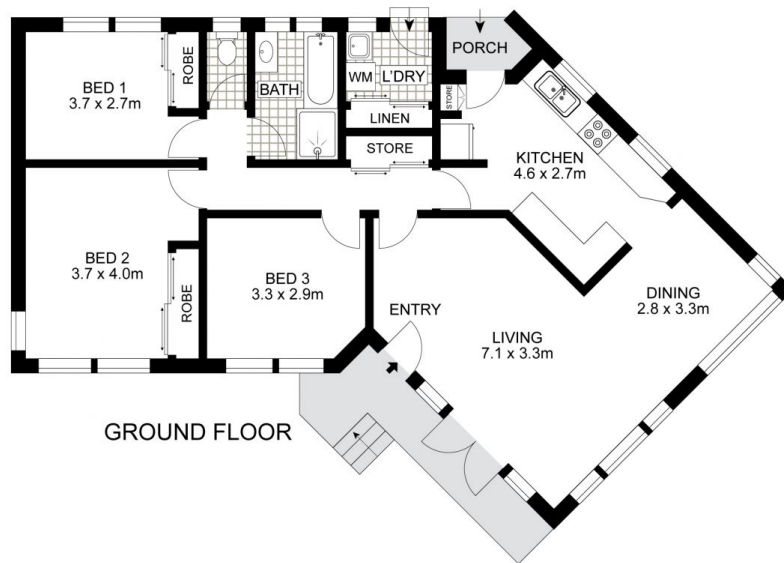
Price : \$ 1,838,000
Land Size : 658 sqm
View : <https://www.uniland.com.au/sale/nsw/parra-matta/telopea/residential/house/7956412>



Andy Lin
02 9869 7788



Annie Zeng
02 9869 7788



Disclaimer: Drawing not to scale. Please note that while the information contained in this floorplan is provided by reliable sources, we cannot guarantee its accuracy. It is intended as a guide. Interested parties should rely on their own enquiry

21 Wylde Street, Telopea

