






#### 4 Wilding Street Marsfield NSW

5  4  2 

Designed by highly reputable Notch Design Studio, destined to set a local benchmark in design quality, construction and high-end interior finishes, this brand-new family home fuses luxury with effortless livability.

With a commanding street presence, the entry sweeps you into a light filled ambient haven where glossy tiles and soaring ceiling impart a feeling of undeniable luxury. Spread across 3 levels huge windows frame a skyline of treetops and a central atrium becomes a lovely feature throughout. Those architectural details continue with the beautiful marble staircase and designer lighting it's all about the high-end finishes and there is no doubt you will love the Miele kitchen.

The accommodation of 5 bedrooms and 4 full bathrooms is thoughtfully spread across the 3 levels so perfect to

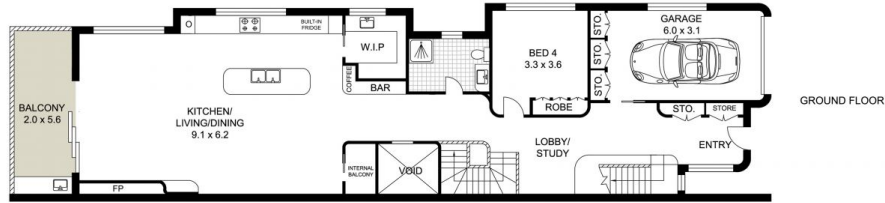
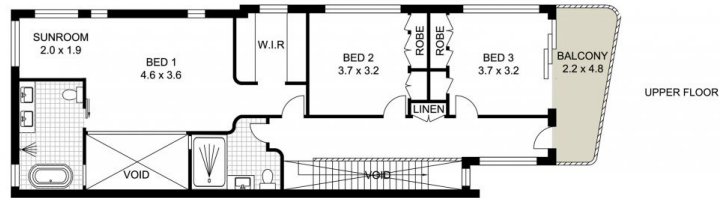
**Price** : \$ 2,931,000  
**Land Size** : 349.5 sqm  
**View** : <https://www.uniland.com.au/sale/nsw/northern-suburbs/marsfield/residential/semi-detached/7949715>



**Andy Lin**  
02 9869 7788



**Sarah Lin**  
0401 378 606



0 1 2 3 4 5m

Scale in metres. Indicative only. Dimensions are approximate.



**DISCLAIMER:** PLANS SHOWN ARE FOR MARKETING PURPOSES ONLY, ALL DIMENSIONS ARE APPROXIMATE AND NOT TO SCALE. THEY ARE SUBJECT TO ERRORS AND INACCURACIES AND NO LIABILITY WILL BE ACCEPTED. INTERESTED PARTIES SHOULD MAKE THEIR OWN INQUIRES.

4 Wilding Street, Marsfield

