




10 Helen Street Epping NSW

6  4  4 

Ideally in architecture, "form follows function." A symphony of light filled contemporary architecture and home to a fantastic floor-plan welcome to number 10 Helen St undoubtedly one of Epping's finest homes!

Set on 835sm (approx.) with a full brick and concrete slab construction this residence has a commanding street presence. Elevated on a wide frontage you're drawn into the keyless entry where the double height foyer makes a dramatic impact.

With soaring shadow line ceilings and a vast open plan its dynamic in its design and brand new, never lived in, what an opportunity. With huge internal living area, you also have endless terraces and alfresco spaces to escape to and I just know you'll love the kitchen. Miele appliances and wrapping into a butler's pantry it's an entertainer's

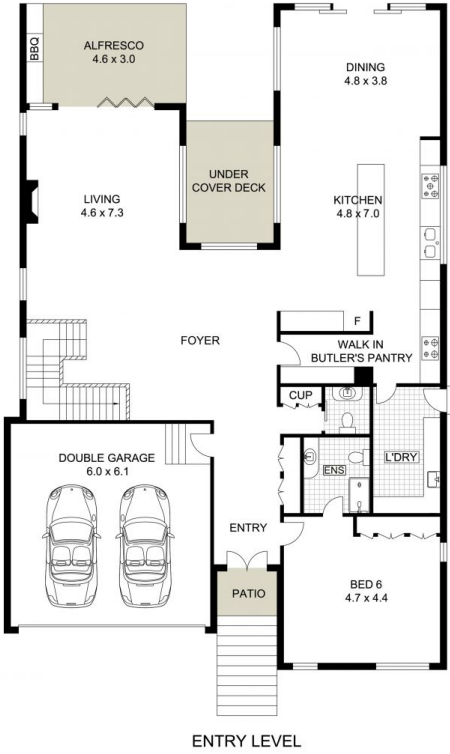
Price : \$ 4,809,000
Land Size : 835 sqm
View : <https://www.uniland.com.au/sale/nsw/northern-suburbs/epping/residential/house/7946278>



Andy Lin
02 9869 7788



Vicky Ruan
02 9869 7788



Scale in metres. Indicative only. Dimensions are approximate.



DISCLAIMER: PLANS SHOWN ARE FOR MARKETING PURPOSES ONLY, ALL DIMENSIONS ARE APPROXIMATE AND NOT TO SCALE. THEY ARE SUBJECT TO ERRORS AND INACCURACIES AND NO LIABILITY WILL BE ACCEPTED. INTERESTED PARTIES SHOULD MAKE THEIR OWN INQUIRES.

10 Helen Street, Epping

