






## 223/18 Epping Park Drive Epping NSW

2  2  2 

This stunningly beautiful apartment is situated on second floor of well maintained Epping Park estate providing northern aspect and excellent flow of light. You will immediately feel the breeze entering the open plan living and dinning area , it provides two spacious bedrooms plus a study nook making it an excellent accommodation for young couples, small family or downsizers.

Enjoying this welcoming and convenient community surrounded by natural greens and nice facilities, this is a must to inspect if you seek high quality, convenience and sense of community.

### Main Features:

- Living area bathed in natural light with floor-to-ceiling double sliding windows opening out to a super-sized balcony

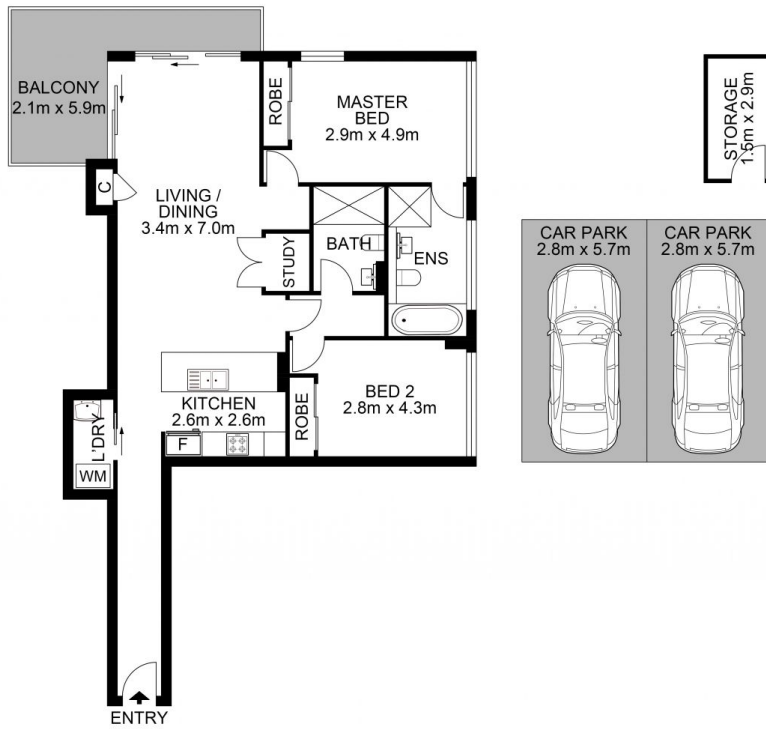
**Price** : \$ 795,000  
**Land Size** : 132 sqm  
**View** : <https://www.uniland.com.au/sale/nsw/northern-suburbs/epping/residential/apartment/7941971>



**Andy Lin**  
02 9869 7788



**Kris Yu**  
02 9869 7788



0 1 2 3 4 5  
Scale in metres. Indicative only. Dimensions are approximate.



**DISCLAIMER:** PLANS SHOWN ARE FOR MARKETING PURPOSES ONLY. ALL DIMENSIONS ARE APPROXIMATE AND NOT TO SCALE. THEY ARE SUBJECT TO ERRORS AND INACCURACIES AND NO LIABILITY WILL BE ACCEPTED. INTERESTED PARTIES SHOULD MAKE THEIR OWN INQUIRES.

223/18 Epping Park Drive, Epping

