



#### 4/20-24 Fullarton Street Telopea NSW

4  2  2 

Conveniently located in the heart of Telopea, this stunning townhouse offers low-maintenance comfort and a functional layout with easy in/out flow to a serene entertaining area.

Within a beautifully maintained complex, this four-bedroom family home is positioned with a short distance of public transport, schools, parks, and local shops.

#### Main features:

- Sun-drenched and spacious living and dining area
- Four generously sized bedrooms with wardrobes, master with ensuite and large WIR
- Modern bathrooms with floor-to-ceiling tiles
- Gourmets kitchen with gas cooking, stone benchtops & dishwasher
- Large covered entertaining area overlooks the leafy and green low-maintenance backyard

**Price** : \$ 1,250,500

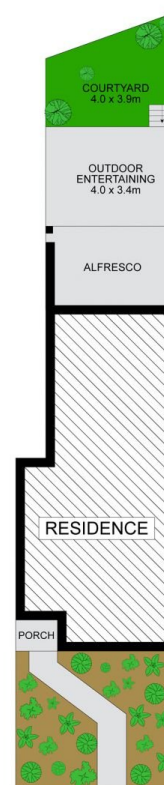
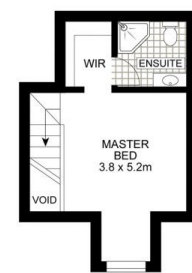
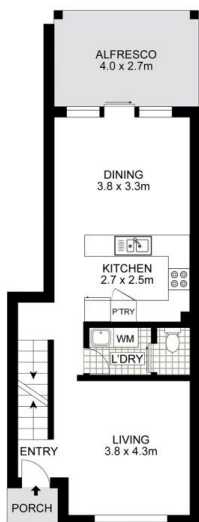
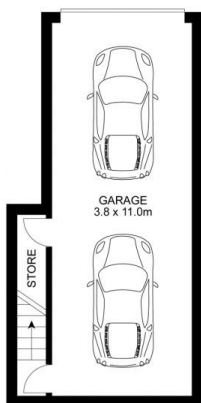
**View** : <https://www.uniland.com.au/sale/nsw/parramatta/telopea/residential/townhouse/7941859>



**Bryan Peng**  
(02) 9869 7788



**Kris Yu**  
02 9869 7788



Disclaimer: Drawing not to scale. Please note that while the information contained in this floorplan is provided by reliable sources, we cannot guarantee its accuracy. It is intended as a guide. Interested parties should rely on their own enquiry

4/20-24 Fullarton Street, Telopea

