



8A Adina Street Telopea NSW

5 🛏 4 🚗 2 🚘

Holding a peaceful enclave with elevated leafy views, 8A Adina Street in Telopea is a brand new 5-bedroom architectural masterpiece - the family entertainer you've always dreamed of.

Soaring ceilings and vast proportions underpin this home's dynamic design. Glossy tiled floors sweep you into the vast open plan where the living extends effortlessly to the outdoor entertaining.

The covered alfresco space is complete with an outdoor kitchen, just the spot for relaxing family BBQs and perfect for children - there's plenty of lawn to enjoy.

Sculptural statement lighting, and huge windows impart a grand sense of scale and sleek joinery adds extra storage.

Price : \$ 2,300,000

Land Size : 457.4 sqm

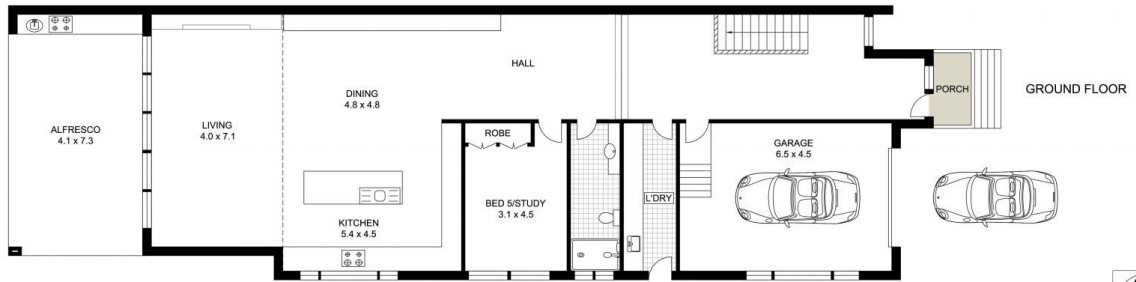
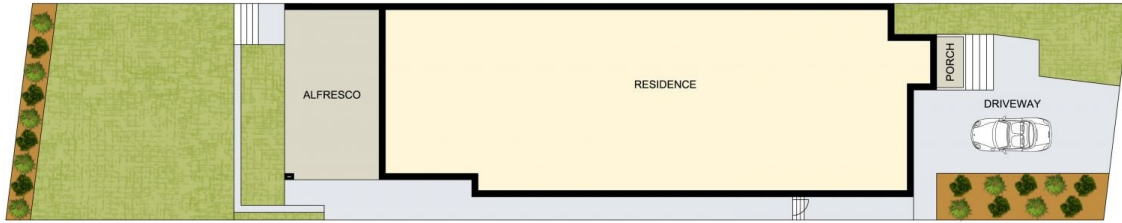
View : <https://www.uniland.com.au/sale/nsw/parra-matta/telopea/residential/semi-detached/7935746>



Andy Lin
02 9869 7788



Sarah Lin
0401 378 606



0 1 2 3 4 5m

Scale in metres. Indicative only. Dimensions are approximate.



DISCLAIMER: PLANS SHOWN ARE FOR MARKETING PURPOSES ONLY, ALL DIMENSIONS ARE APPROXIMATE AND NOT TO SCALE. THEY ARE SUBJECT TO ERRORS AND INACCURACIES AND NO LIABILITY WILL BE ACCEPTED. INTERESTED PARTIES SHOULD MAKE THEIR OWN INQUIRES.

8A Adina Street, Telopea

