




51A River Road Ermington NSW

5  3  2 

Nestled just a short stroll from the water's edge, this newly renovated home showcases modern luxury, convenience, and cosiness.

Two levelled home which boasts a spacious and well-structured layout, catering to both functionality and comfort.

Positioned within easy reach of George Kendall Riverside Park and Ken Newman Park, the home provides pleasant living for leisurely strolls and outdoor activities. Potential nearby location for quick access to the future Ermington light rail stop. Ermington Woolworths and nearby shops ensure effortless access to daily essentials and conveniences, completing the picture of ideal suburban living.

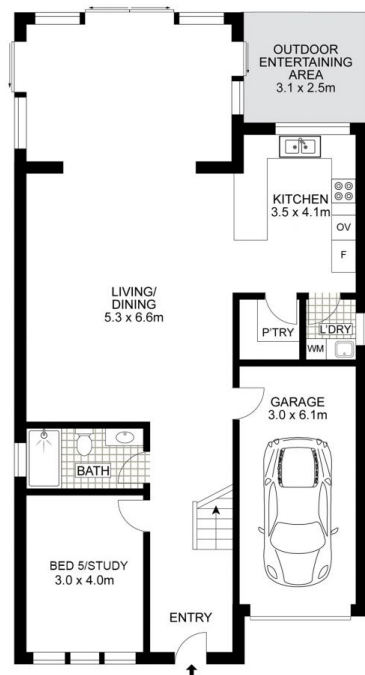
Price : \$ 2,005,888
Land Size : 302 sqm
View : <https://www.uniland.com.au/sale/nsw/parra-matta/ermington/residential/house/7932053>



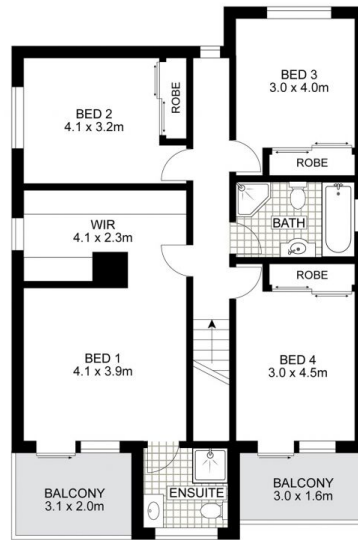
Andy Lin
02 9869 7788



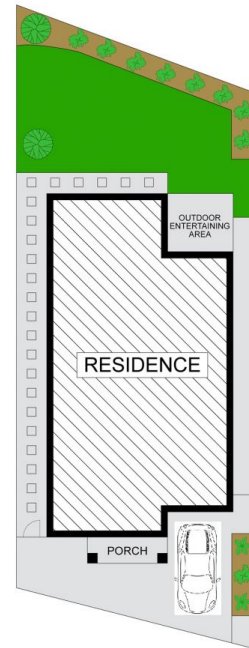
Vicky Ruan
02 9869 7788



GROUND FLOOR



FIRST FLOOR



SITE PLAN



Disclaimer: Drawing not to scale. Please note that while the information contained in this floorplan is provided by reliable sources, we cannot guarantee its accuracy. It is intended as a guide. Interested parties should rely on their own enquiry

51A River Road, Ermington

