






33A Balaclava Road Eastwood NSW

5  3  2 

Situated in one of Eastwood's most sought-after pockets, with short walking distance to Eastwood Centre, Train Station, and schools, this 5-bedrooms residence offers a great opportunity for location and conveniences.

Awash with natural light and designed with quality and 'form follows function' in mind, this home with low-maintenance lifestyle and all conveniences would make a great place to live.

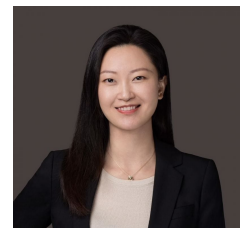
Main Features:

- * Sun-drenched massive living and dining area
- * Open plan kitchen with Caesar Stone bench top and European stainless steel appliances
- * Covered alfresco flowing into easy-care level yard
- * All bedrooms appointed with built-in-robe , master with

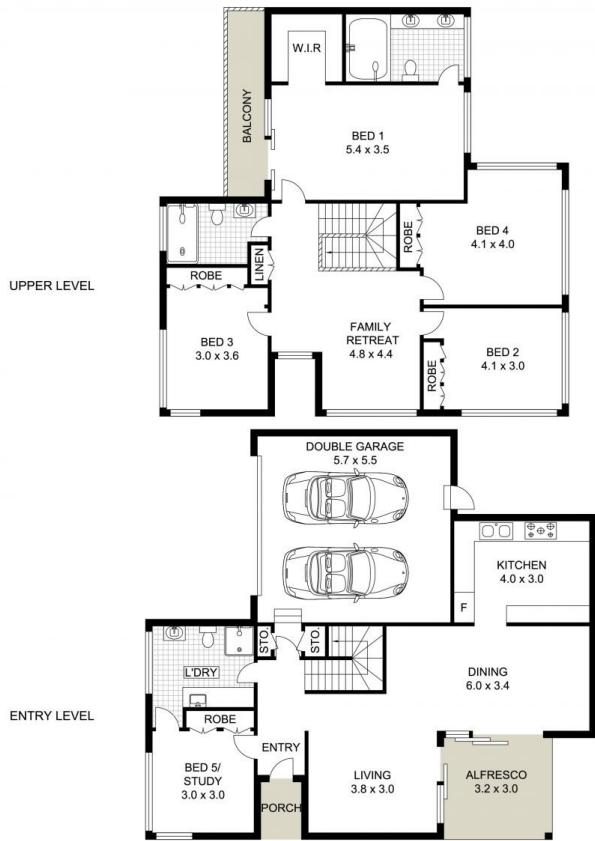
Price : Just Listed
Land Size : 361.7 sqm
View : <https://www.uniland.com.au/sale/nsw/northern-suburbs/eastwood/residential/semi-detached/7928992>



Andy Lin
02 9869 7788



Sarah Lin
0401 378 606



Scale in metres. Indicative only. Dimensions are approximate.

DISCLAIMER: PLANS SHOWN ARE FOR MARKETING PURPOSES ONLY, ALL DIMENSIONS ARE APPROXIMATE AND NOT TO SCALE. THEY ARE SUBJECT TO ERRORS AND INACCURACIES AND NO LIABILITY WILL BE ACCEPTED. INTERESTED PARTIES SHOULD MAKE THEIR OWN INQUIRES.



SITE PLAN (NOT TO SCALE)



33A Balaclava Road, Eastwood

