



## 1112/26 Cambridge Street Epping NSW

2  1  1 

Located on the eleven floor of this iconic Epping building, this executive two-bedroom apartment is a masterpiece of design, boasting top-notch finishes. It promises a life of ease and luxury at the heart of Epping.

Inhabitants of this exceptional dwelling will bask in ample natural light, captivating views, and unparalleled comfort daily. Every imaginable convenience, including schools, transportation, shopping, entertainment, restaurants, and parks, is mere minutes away by foot. Additionally, it's just steps away from a supermarket, medical center, and childcare facility.

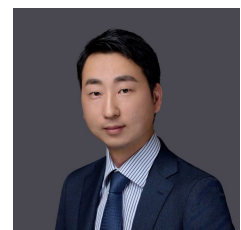
### Main Features:

- Open-plan living/dining with uninterrupted panoramic views via floor-to-ceiling windows.
- Oversize bedroom all with built-in wardrobe

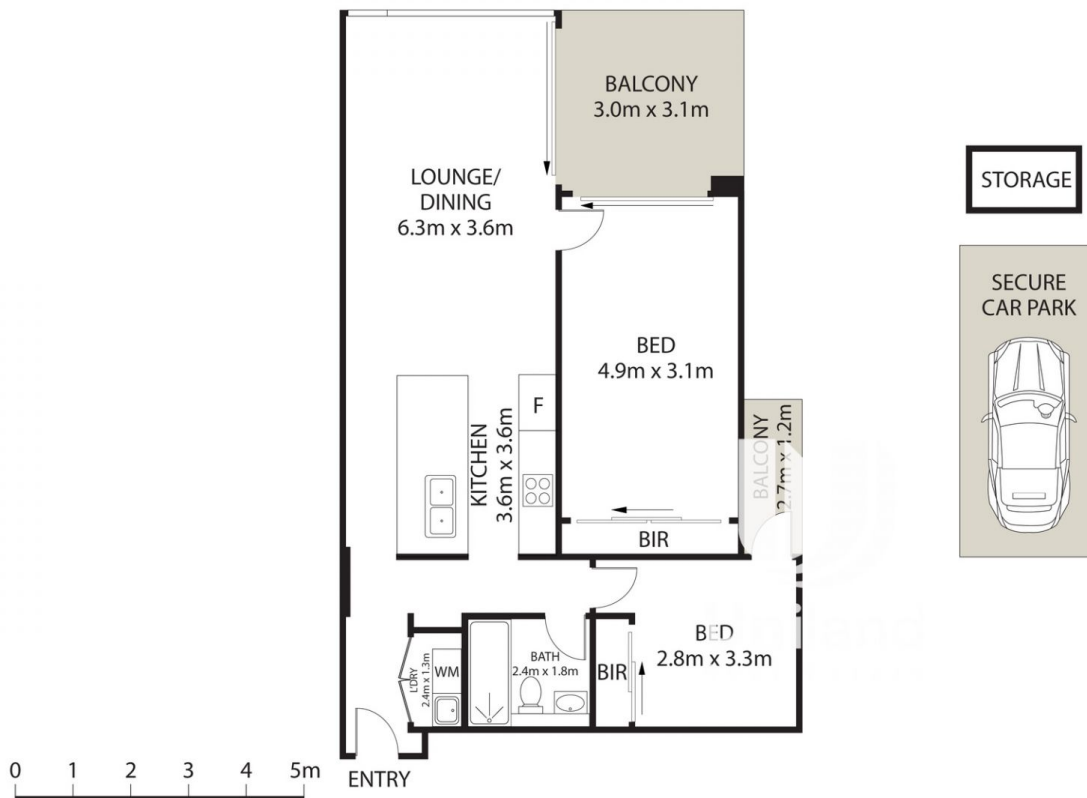
**Price** : Contact Agent  
**Building Size** : 101 sqm  
**View** : <https://www.uniland.com.au/sale/nsw/northern-suburbs/epping/residential/apartment/7925146>



**Andy Lin**  
02 9869 7788



**Ti Zhou**  
02 9869 7788



Scale in metres. Indicative only. Dimensions are approximate.

DISCLAIMER: PLANS SHOWN ARE FOR MARKETING PURPOSES ONLY. ALL DIMENSIONS ARE APPROXIMATE AND NOT TO SCALE. THEY ARE SUBJECT TO ERRORS AND INACCURACIES AND NO LIABILITY WILL BE ACCEPTED. INTERESTED PARTIES SHOULD MAKE THEIR OWN ENQUIRIES.

1112/26 Cambridge Street, Epping

