



22/9-15 Lloyds Avenue Carlingford NSW

2  **2**  **1** 

Nestled in one of the most sought after addresses in Carlingford, this magnificent resort style living unit offers supreme quality, security, comfort and convenience. This beautiful and quiet 2-bedroom, 2-bathroom unit is in a security building in the catchment area of Carlingford West Primary School.

Located within only minutes' walk of all major transport options including upcoming Carlingford Light Rail and bus services. Carlingford Court and Village are a short stroll away. Easy driving access to Parramatta or M2 direct to the City. This delightful residence will perfectly suit first home buyers, investors and downsizers looking for all of today's modern features within a highly sought-after locale.

Features include:

-Spacious open plan lounge and dining area;

Price : \$ 740,000

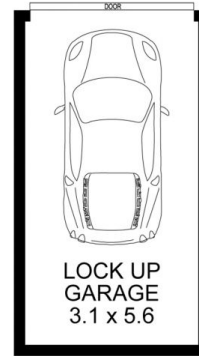
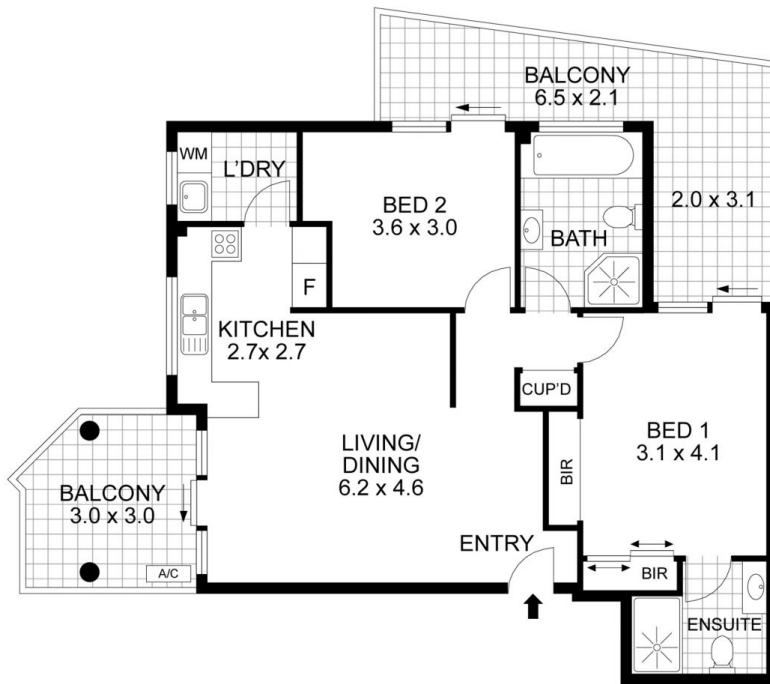
View : <https://www.uniland.com.au/sale/nsw/northern-suburbs/carlingford/residential/unit/7902874>



Andy Lin
02 9869 7788



Karen Ge
02 9869 7788



Disclaime. Drawing not to scale. Please note that while the information contained in this floorplan is provided by reliable sources, we cannot guarantee its accuracy. It is intended as a guide. Interested parties should rely on their own enquiry

22/9-15 Lloyds Avenue, Carlingford

