



5 Way Close Carlingford NSW

5 🏠 3 🚗 2 🚗

The home rests on a large 796.7sqm with sweeping lawns, manicured gardens and water feature, in a whisper quiet pocket, a stroll to Carlingford High School, Roselea Public School, the bus and local shops.

Land Size : 796.7 sqm

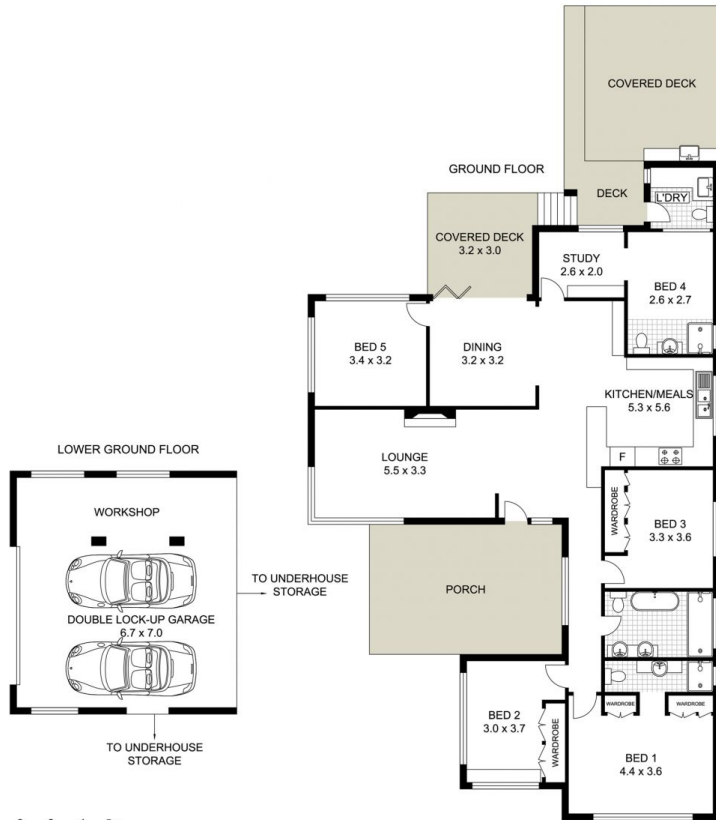
View : <https://www.uniland.com.au/lease/nsw/north-ern-suburbs/carlingford/residential/house/7854797>

Main Features:

- Contemporary flooring, high ceiling, light filled interiors
- Northern aspect formal living with featured fireplace
- Five bedrooms including two master suites with en-suites, second master suite with a study/home office
- Gourmet gas kitchen with quality stone benchtops, breakfast bar, Bosch dishwasher
- Three bathrooms featuring rain and hand showers, floor to ceiling tiling, extra toilet in the laundry
- Sun-drenched dining with stackable sliders open to the covered entertaining deck



Sammi Sun
02 9869 7788



0 1 2 3 4 5m
 Scale in metres. Indicative only. Dimensions are approximate.



DISCLAIMER: PLANS SHOWN ARE FOR MARKETING PURPOSES ONLY, ALL DIMENSIONS ARE APPROXIMATE AND NOT TO SCALE. THEY ARE SUBJECT TO ERRORS AND INACCURACIES AND NO LIABILITY WILL BE ACCEPTED. INTERESTED PARTIES SHOULD MAKE THEIR OWN INQUIRES.

5 Way Close, Carlingford

