



239/22 Hudson Street Lewisham NSW

1  1 

Proudly representing this gorgeous apartment in "Luna Lewisham" with every possible convenience right on your doorstep. Offering stylish décor, quality finishes and endless natural light, this leafy view residence features an open plan living and dining flowing to a large winter garden/study, perfect for all year round entertaining or your work from home need. Sizeable bedroom with built ins, designer bathroom and kitchen, this apartment has them all.

Building Size : 67 sqm
View : <https://www.uniland.com.au/lease/nsw/inner-west/lewisham/residential/apartment/7835912>

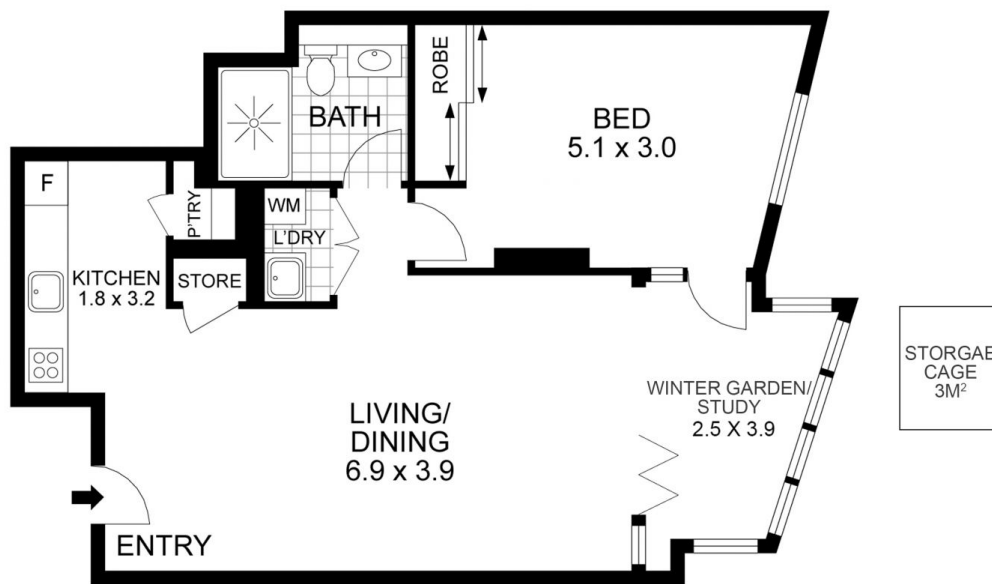
The locale is amazingly 7km from the CBD with a choice of public transport including light rail, trains and buses all a stone's throw away, local shops cafes, restaurants are all nearby, as well as quality schools, top universities and major shopping centres. This is an amazing opportunity to secure a top quality home in the popular inner west enjoying convenient and luxury lifestyle.



Linda Bo
02 9869 7788



Sammi Sun
02 9869 7788



Disclaimer: Drawing not to scale. Please note that while the information contained in this floorplan is provided by reliable sources, we cannot guarantee its accuracy. It is intended as a guide. Interested parties should rely on their own enquiry

239/22 Hudson Street, Lewisham

