






103/18 Park Lane Chippendale NSW

2  2  1 

Quality apartment | Hidden Gem in the Central (shop is not included)

Uniland is proud to present you with this fantastic opportunity: 103/18 Park Lane Chippendale.

2 bedrooms apartment has own entrance.

- * State of art designed with high-end finishes throughout
- * Great street/community exposure with high daily pedestrian traffic
- * Spacious living area plus two bedrooms and two bathrooms (including ensuite)
- * Gourmet gas kitchen with stone benchtop and quality appliances
- * Other Features: internal laundry, ducted air-conditioning, security single car spaces.

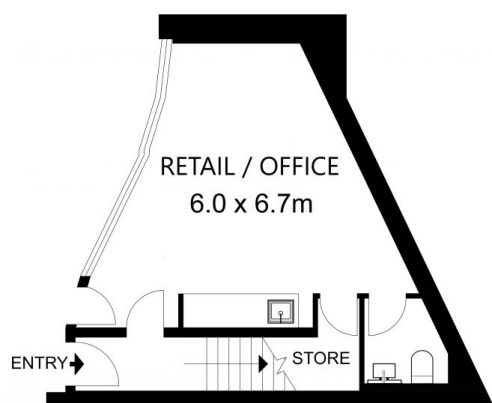
View : <https://www.uniland.com.au/lease/nsw/sydney-city/chippendale/residential/apartment/7835434>



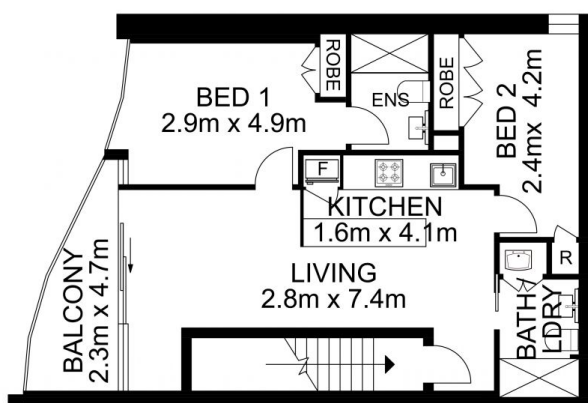
Lisa Liu
02 9869 7788



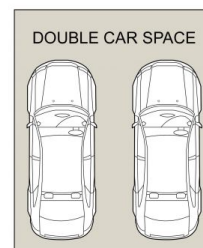
Linda Bo
02 9869 7788



ENTRY LEVEL



UPPER LEVEL



STORAGE

Internal Space: 114 sqm
Car Space: 26 sqm
Storage: 2 sqm
Total On Title: 142 sqm

0 1 2 3 4 5
Scale in metres. Indicative only. Dimensions are approximate.



DISCLAIMER: PLANS SHOWN ARE FOR MARKETING PURPOSES ONLY. ALL DIMENSIONS ARE APPROXIMATE AND NOT TO SCALE. THEY ARE SUBJECT TO ERRORS AND INACCURACIES AND NO LIABILITY WILL BE ACCEPTED. INTERESTED PARTIES SHOULD MAKE THEIR OWN INQUIRES.

103/18 Park Lane, Chippendale

