



206/2 Saunders Close Macquarie Park NSW

1  1  1 

Beautiful present north west facing one bedroom apartment features abundance sunlight during the day flowing onto the living areas and the bedroom. Nestled in the central of Macquarie Park, within a short levelled stroll to Macquarie shopping Centre, Metro, and Macquarie University.

Building Size : 74 sqm

View

: <https://www.uniland.com.au/lease/nsw/northern-suburbs/macquarie-park/residential/apartment/7826107>

Main Feature:

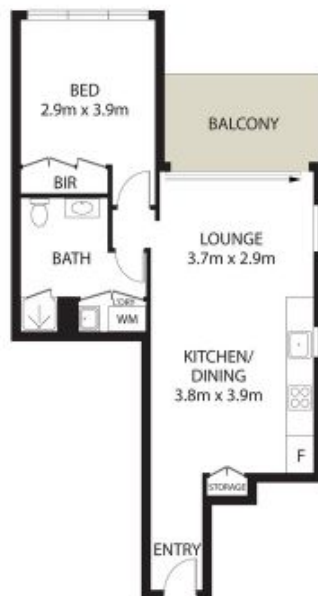
- Open plan with seamlessly combined dining and living areas
- Sun soaked spacious balcony leading to living areas
- Over size bedroom with built in wardrobe
- Secure basement car space plus a substantial storage cage
- Outdoor swimming pool and indoor gym within the complex
- Other features: internal laundry, security building with intercom system



Sammi Sun
02 9869 7788



Linda Bo
02 9869 7788



0 1 2 3 4 5m

Scale in metres. Indicative only. Dimensions are approximate.

DISCLAIMER: PLANS SHOWN ARE FOR MARKETING PURPOSES ONLY. ALL DIMENSIONS ARE APPROXIMATE AND NOT TO SCALE. THEY ARE SUBJECT TO ERRORS AND INACCURACIES AND NO LIABILITY WILL BE ACCEPTED. INTERESTED PARTIES SHOULD MAKE THEIR OWN ENQUIRIES.



206/2 Saunders Close, Macquarie Park

