



13/25-29 Bowden Street Harris Park NSW

2  1  1 

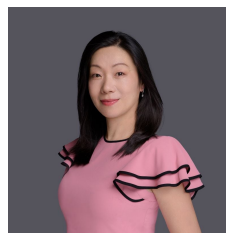
Spacious 1st floor apartment located at the rear of a quiet, well maintained security block.

Spacious and light-filled throughout, this full brick 2 bedroom presents an exceptional opportunity for first home buyers or investors seeking convenience and good returns.

A must-see for first-home buyers and astute investors alike, value-adding potential and wonderfully convenient Harris Park location. Situated within a short stroll to vibrant Harris Park & Granville shopping & dining strips, minutes to Harris park station, Parramatta station and Parramatta CBD, Westfield Shopping centre, parks, reputable schools, trendy restaurants, cafes, Rosehill Gardens Racecourse, rapid access to James Ruse Drive & M4 West Connex.

Land Size : 86 sqm

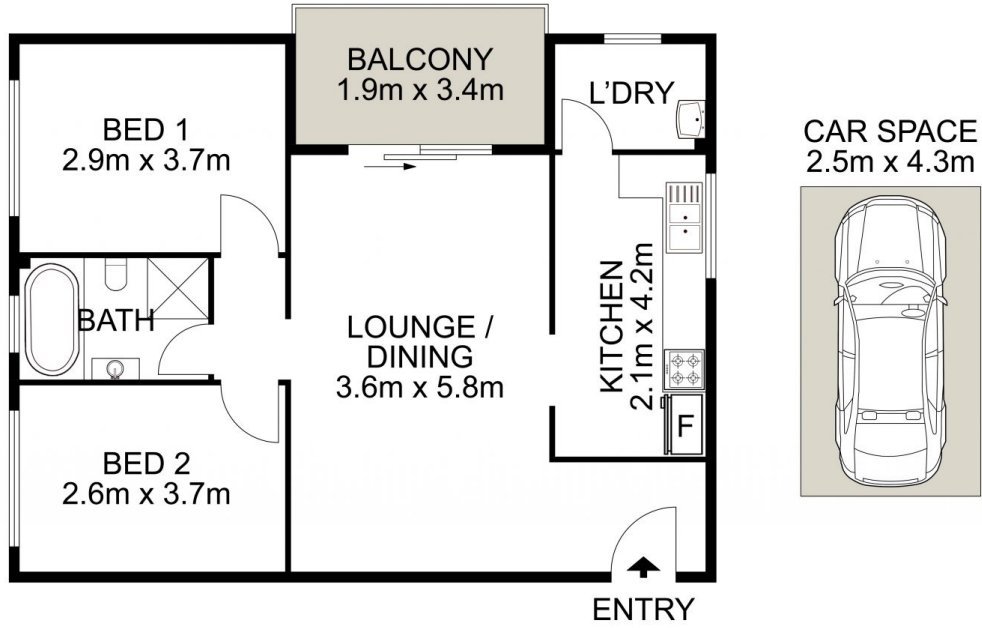
View : <https://www.uniland.com.au/sale/nsw/parra-matta/harris-park/residential/unit/7163636>



Julie Zhang
02 9869 7788



Andy Lin
02 9869 7788



0 1 2 3 4 5
 Scale in metres. Indicative only. Dimensions are approximate.



DISCLAIMER: PLANS SHOWN ARE FOR MARKETING PURPOSES ONLY. ALL DIMENSIONS ARE APPROXIMATE AND NOT TO SCALE. THEY ARE SUBJECT TO ERRORS AND INACCURACIES AND NO LIABILITY WILL BE ACCEPTED. INTERESTED PARTIES SHOULD MAKE THEIR OWN INQUIRES.

13/25-29 Bowden Street, Harris Park

