



**2005/112 Talavera Road Macquarie Park NSW**

2  2  1 

Situated on level 20 in the prime location of Macquarie park , this stunning apartment sets the tone with its vast layout, beautiful finishes and walk to everything convenience. Flooded with natural light, it features a palatial open plan living area and dining areas flowing onto great size balconies.

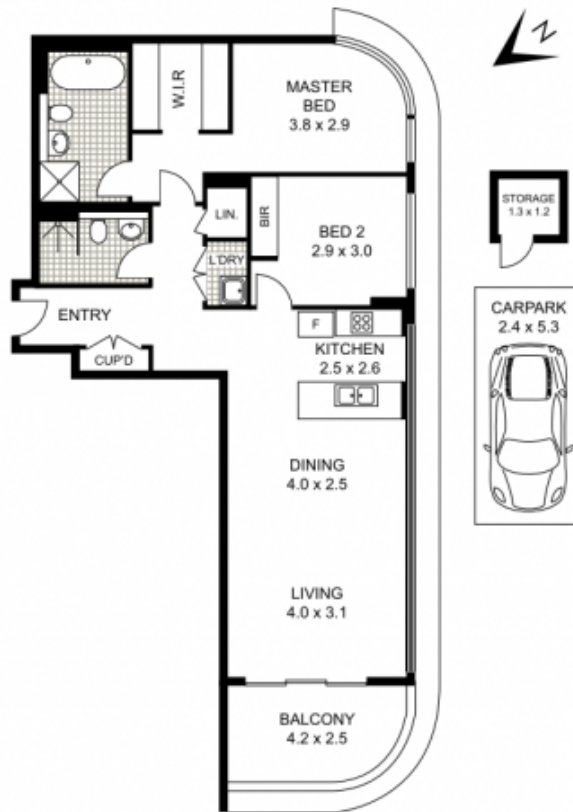
**Main feature:**

- Generous 2 bedroom with 112 sqm total area on title
- Sun-drenched open living and dining area flowing seamlessly to the balcony
- Breath-taking uninterrupted views of Lane Cove National Park and the Sydney CBD skyline
- Contemporary gas kitchen with Bosch appliances and Ceasarstone island benchtop
- Stylish modern bathrooms with floor to ceiling tiled
- Security car space plus storage

**Building Size** : 112 sqm  
**View** : <https://www.uniland.com.au/lease/nsw/northern-suburbs/macquarie-park/residential/apartment/7154551>



**Lisa Liu**  
**02 9869 7788**



0 1 2 3 4 5

Scale in metres. Indicative only. Dimensions are approximate.

DISCLAIMER: PLANS SHOWN ARE FOR MARKETING PURPOSES ONLY. ALL DIMENSIONS ARE APPROXIMATE AND NOT TO SCALE. THEY ARE SUBJECT TO ERRORS AND INACCURACIES AND NO LIABILITY WILL BE ACCEPTED. INTERESTED PARTIES SHOULD MAKE THEIR OWN INQUIRIES.

2005/112 Talavera Road, Macquarie Park

