



511/19 Epping Road Epping NSW

2  2  1 

This two storey north facing apartment is conveniently located within 400m walk to the Epping Metro & train station facing the quiet side of the street, it features sun filled lounge and dining with high ceiling opening onto the entertaining balcony, quality finishes throughout and elegantly designed with modern taste. This is a rare find and a must to inspect.

Main Features:

- Two generously sized bedrooms one on each level, both with built-in robes
- Open plan living/dining area with stunning high ceiling with effortless flow to balcony
- Designer bathrooms and main with ensuite
- Gourmet kitchen with stainless steel appliances and gas cooking
- Ducted air conditioning and internal laundry

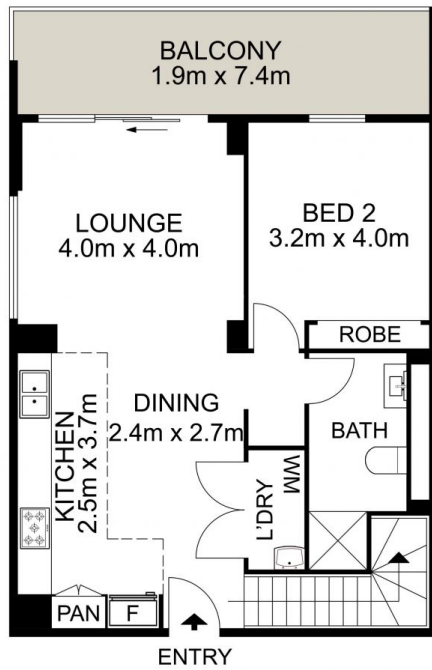
Price : \$ 825,000
Building Size : 110 sqm
View : <https://www.uniland.com.au/sale/nsw/northern-suburbs/epping/residential/apartment/7079099>



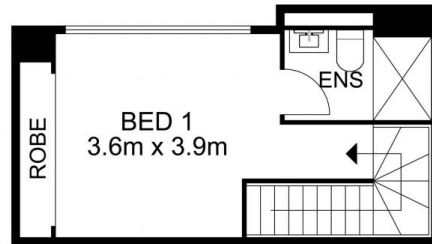
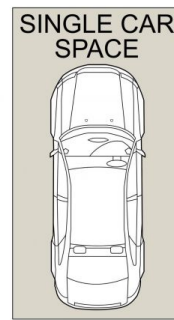
Andy Lin
02 9869 7788



Annie Zeng
02 9869 7788



GROUND FLOOR



FIRST FLOOR

0 1 2 3 4 5
Scale in metres. Indicative only. Dimensions are approximate.



DISCLAIMER: PLANS SHOWN ARE FOR MARKETING PURPOSES ONLY. ALL DIMENSIONS ARE APPROXIMATE AND NOT TO SCALE. THEY ARE SUBJECT TO ERRORS AND INACCURACIES AND NO LIABILITY WILL BE ACCEPTED. INTERESTED PARTIES SHOULD MAKE THEIR OWN INQUIRES.

511/19 Epping Road, Epping

