



## 11 Roxburgh Crescent Stanhope Gardens NSW

4 2 2

This impeccably presented fully renovated home is situated in a sought-after community, with a close to everything local and only 700 meters (approx.) walking distance to Kellyville Station. It is a perfect combination of functionality, space and convenience and will be ideal for first home buyers, growing families and astute investors.

**View :** <https://www.uniland.com.au/sale/nsw/western-sydney/stanhope-gardens/residential/house/6965154>

### Main Features:

- Boasting a premier corner position in quite street
- Multi large living & dining areas
- Deluxe living/dining zone flows to contemporary outdoor area
- Vast, child-friendly backyard capturing northerly sunlight
- Large gourmet kitchen with gas cooking and quality appliances
- Four large bedrooms, master with walk-in wardrobe,



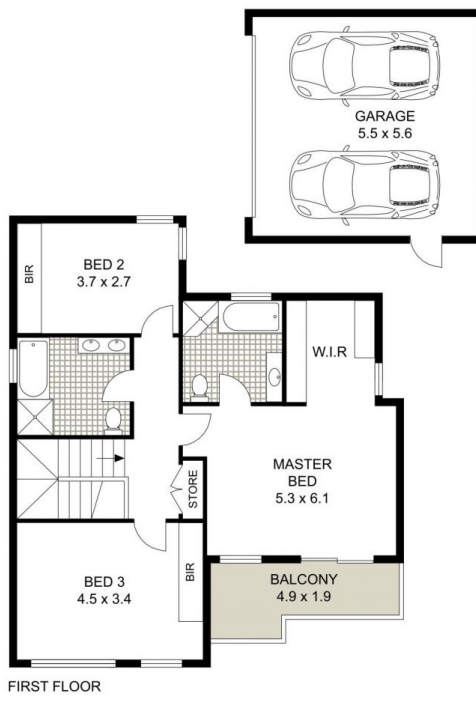
**Andy Lin**  
02 9869 7788



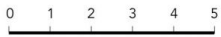
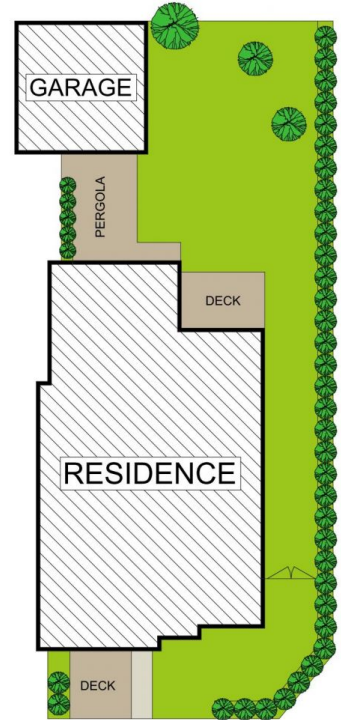
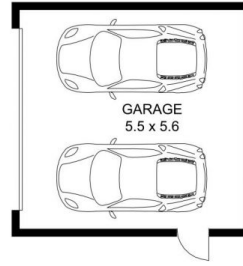
**Kris Yu**  
02 9869 7788



GROUND FLOOR



FIRST FLOOR



Scale in metres. Indicative only. Dimensions are approximate.



DISCLAIMER: PLANS SHOWN ARE FOR MARKETING PURPOSES ONLY, ALL DIMENSIONS ARE APPROXIMATE AND NOT TO SCALE. THEY ARE SUBJECT TO ERRORS AND INACCURACIES AND NO LIABILITY WILL BE ACCEPTED. INTERESTED PARTIES SHOULD MAKE THEIR OWN INQUIRES.

11 Roxburgh Crescent, Stanhope Gardens

